

# VECTOR PIPELINE, LLC AND SERVICE PROVIDER PERSONNEL

## VECTOR PIPELINE, LLC PERSONNEL

**John T. Donaldson, Jr.**  
President

### Vector Management Committee

Enbridge Inc. - Brian McKerlie  
Bob Panico - Alternate  
DTE Energy Company - David Slater  
Gregg Russell - Alternate

Lisa A. Steinman  
Administrative Assistant/  
Office Manager

Roland M. Vandebroeck  
Director, Regulatory,  
Accounting and Financial  
Reporting

David Bilyk  
Director,  
Operations and Engineering

Pete Cianci  
Sr. Vice President,  
Marketing & Business  
Development

Belinda Friis  
General Counsel, Corporate  
Secretary  
& Chief Compliance Officer


Amy S. Bruhn  
Manager,  
Regulatory and Administration

Brian Schultz  
Supervisor, Operations and  
Engineering

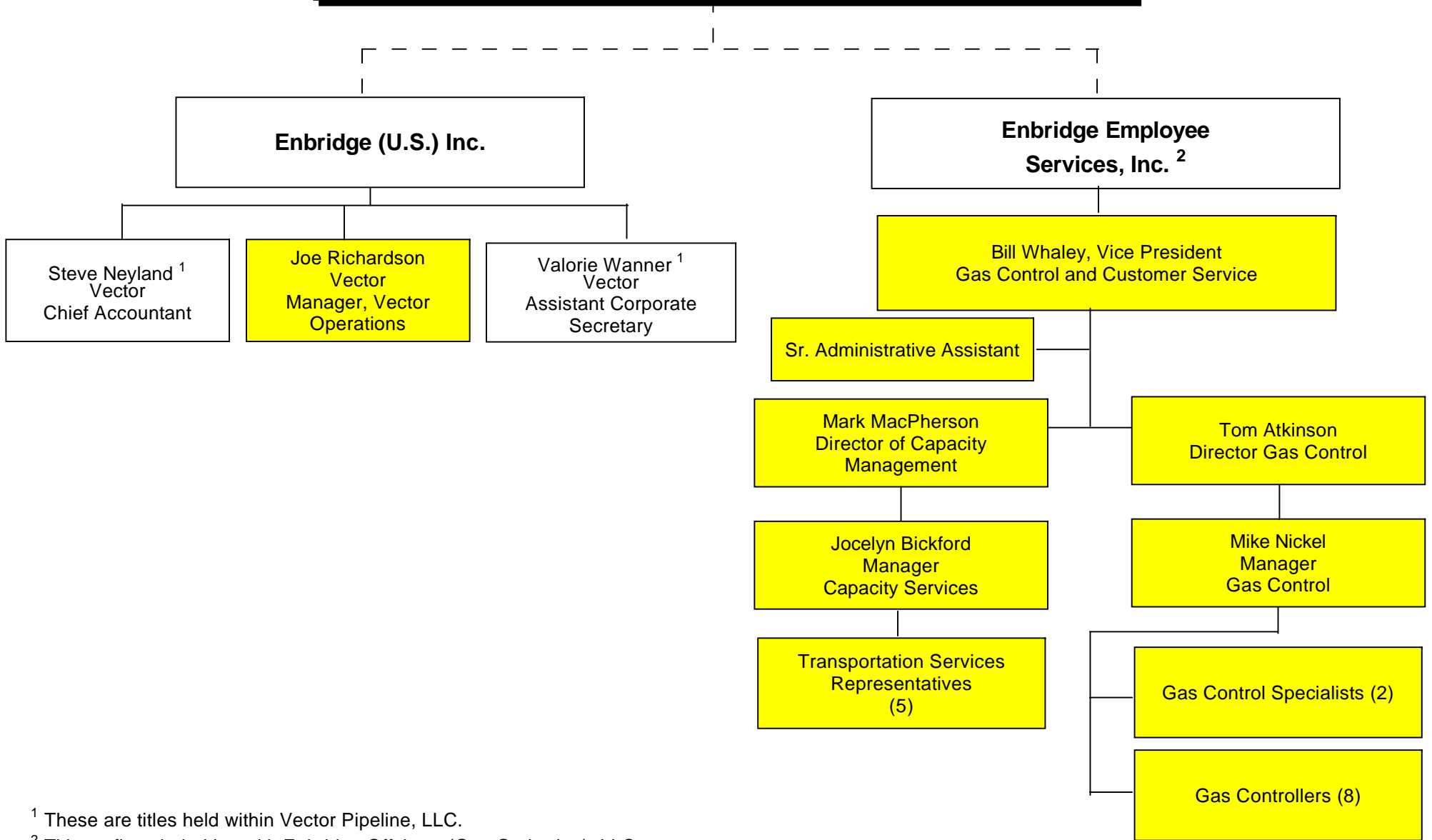
Dennis Scheibe  
Manager,  
Transportation Services

Matthew M. Malinowski  
Director,  
Market Development

Service Providers  
Enbridge (U.S.) Inc. and  
Enbridge Employee  
Services, Inc.  
See Next Page


 Transmission Function

**VECTOR PIPELINE, LLC  
SERVICE PROVIDERS AND PERSONNEL PROVIDED**



<sup>1</sup> These are titles held within Vector Pipeline, LLC.

<sup>2</sup> Titles reflect their titles with Enbridge Offshore (Gas Gathering), LLC.

 Transmission Function