



Vector Pipeline™

Vector Pipeline

Customer Meeting

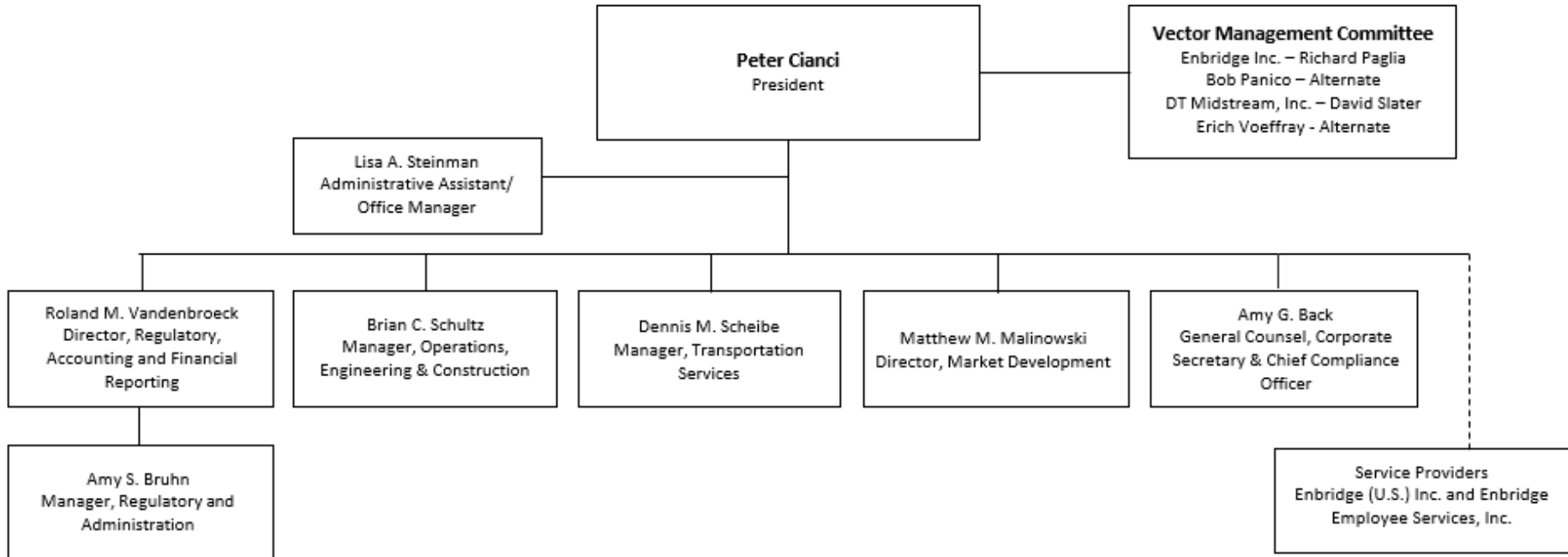
October 6, 2022

Sheraton Grand at Wild Horse Pass

Chandler, AZ



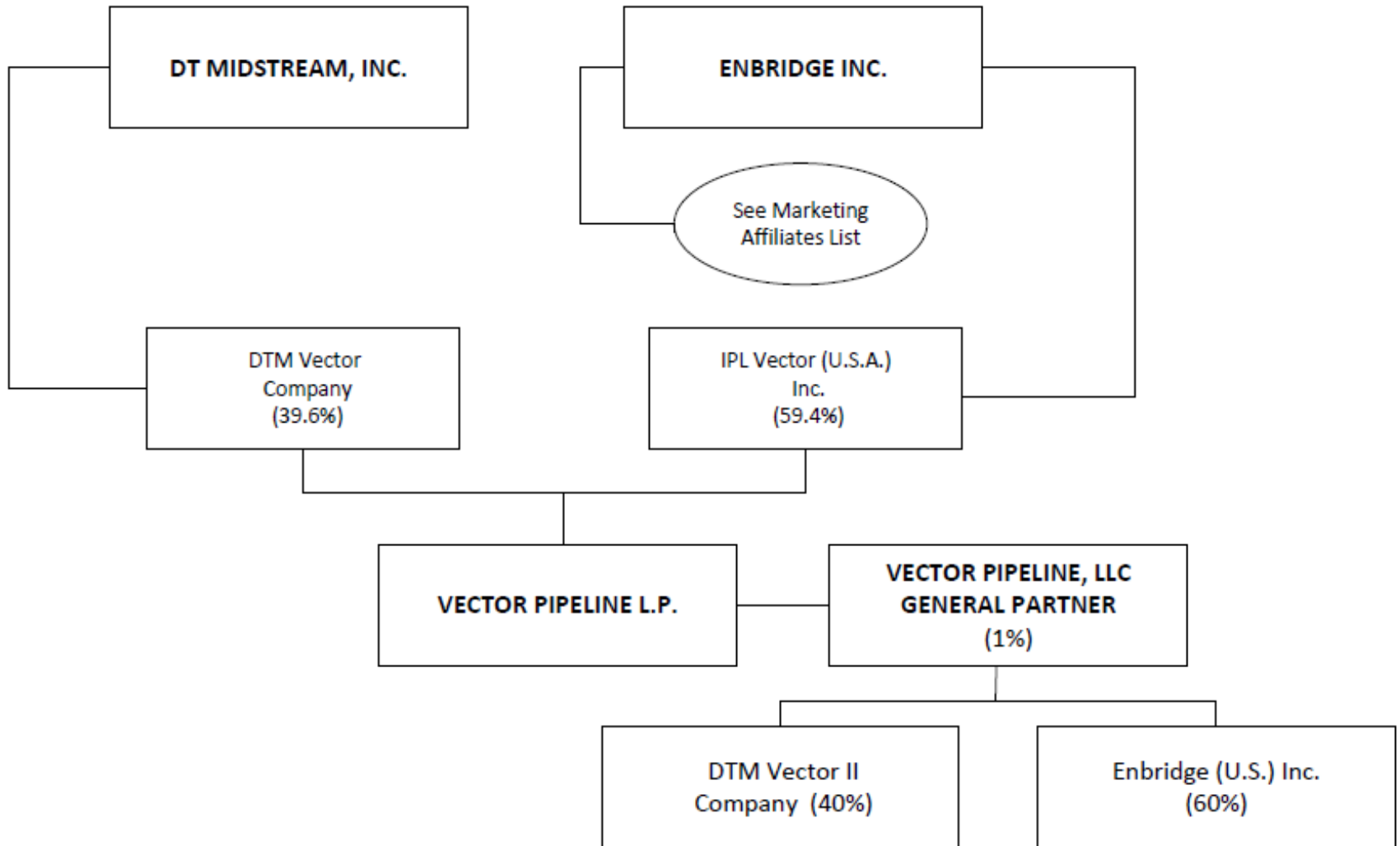
Organization Chart





Vector Pipeline™

Partnership Structure





Vector Pipeline™

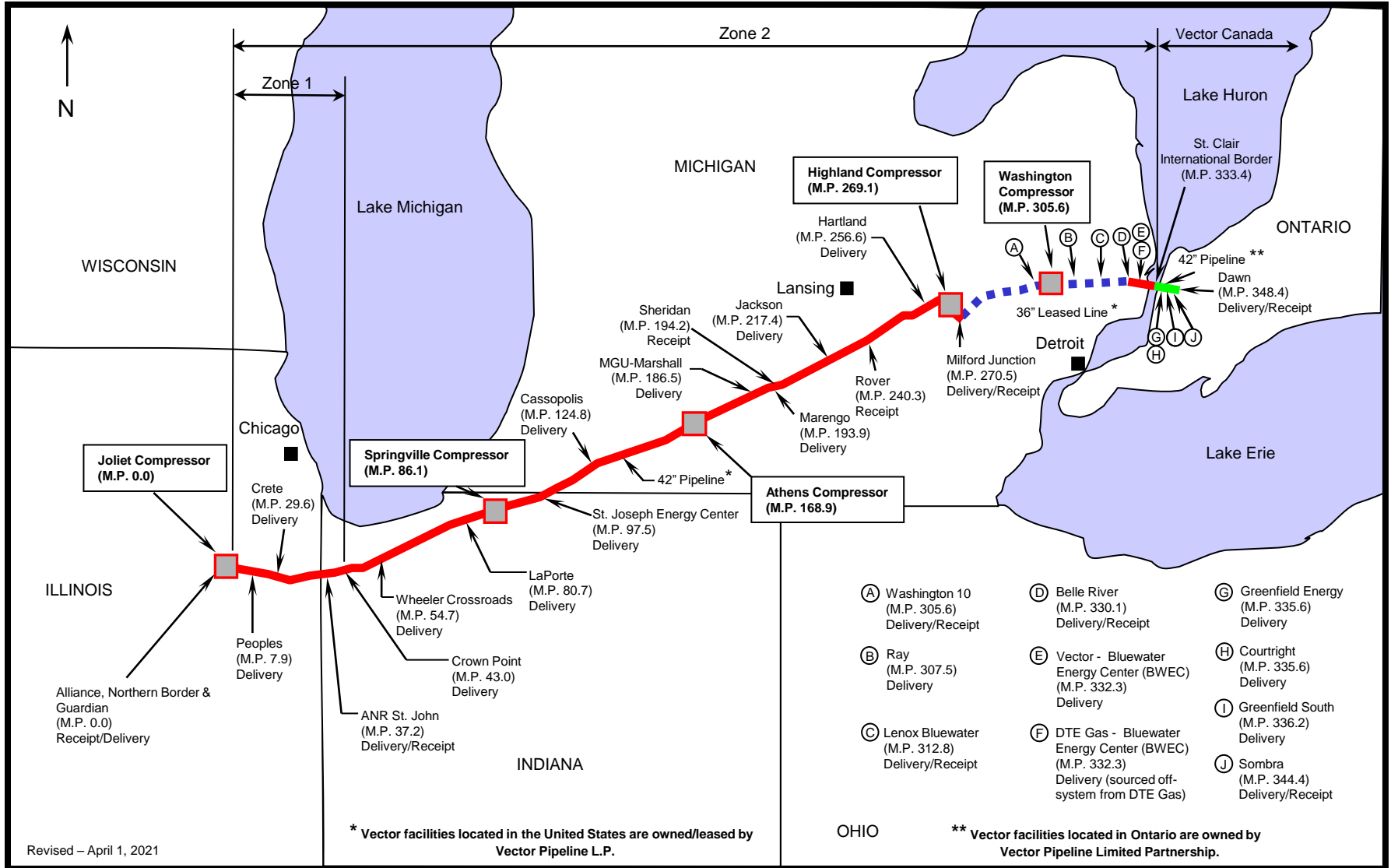
Matt Malinowski

Director, Market Development



Vector Pipeline System Map

Vector Pipeline™



- | | | |
|---|--|---|
| (A) Washington 10 (M.P. 305.6) Delivery/Receipt | (D) Belle River (M.P. 330.1) Delivery/Receipt | (G) Greenfield Energy (M.P. 335.6) Delivery |
| (B) Ray (M.P. 307.5) Delivery | (E) Vector - Bluewater Energy Center (BWEC) (M.P. 332.3) Delivery | (H) Courtright (M.P. 335.6) Delivery |
| (C) Lenox Bluewater (M.P. 312.8) Delivery/Receipt | (F) DTE Gas - Bluewater Energy Center (BWEC) (M.P. 332.3) Delivery (sourced off-system from DTE Gas) | (I) Greenfield South (M.P. 336.2) Delivery |
| | | (J) Sombra (M.P. 344.4) Delivery/Receipt |

* Vector facilities located in the United States are owned/leased by Vector Pipeline L.P.

** Vector facilities located in Ontario are owned by Vector Pipeline Limited Partnership.

Revised - April 1, 2021



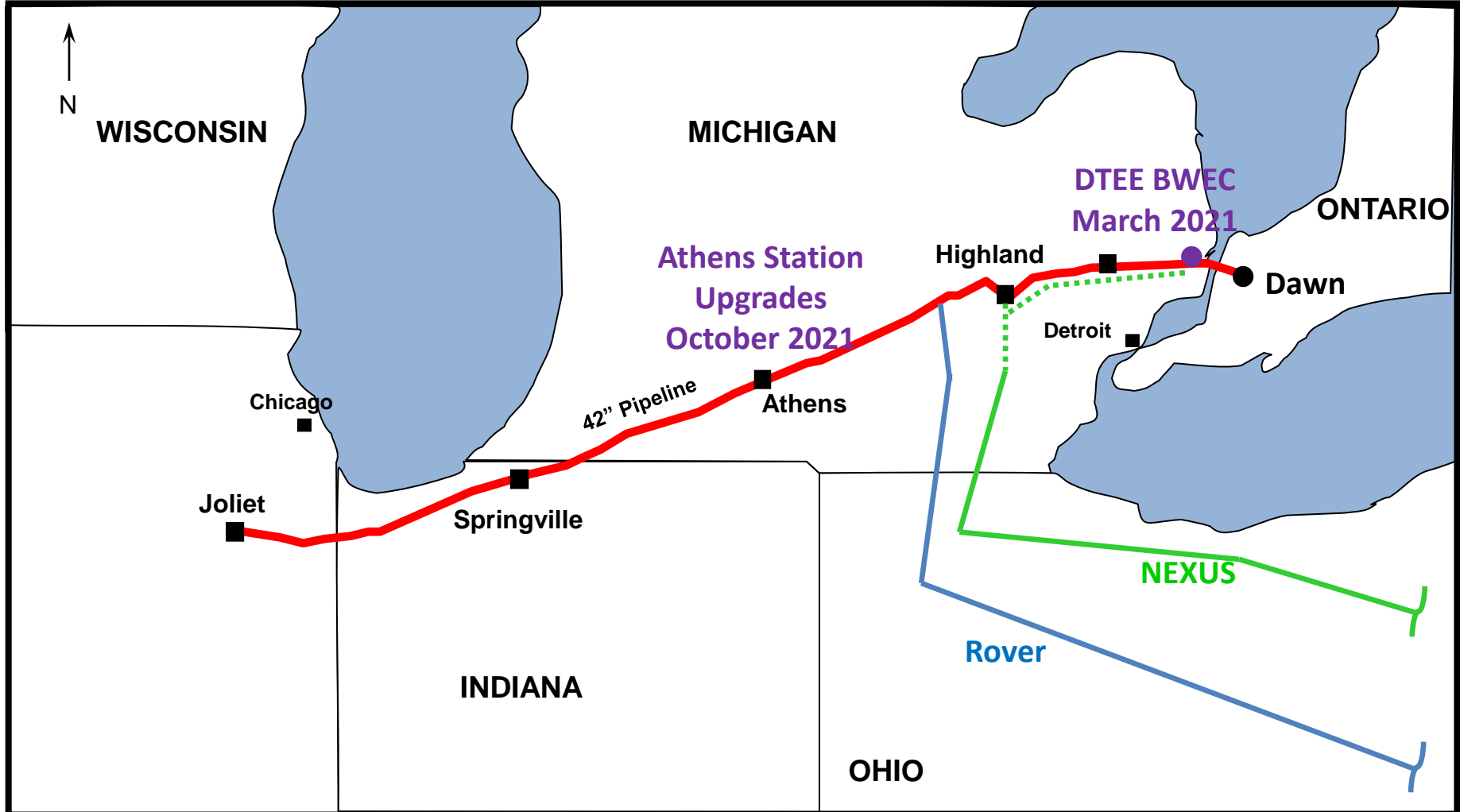
Vector Pipeline™

Projects



Vector Pipeline™

Recently Completed Projects





Vector Pipeline™

DTE Electric BVEC

- New 1100 MW combined cycle powerplant just east of Belle River owned by DTE Electric
- Vector constructed a dedicated 24-inch lateral with a meter from Vector's mainline and a meter to source gas from DTE Gas Company (nominations from these two meters can only flow to this powerplant). Vector owns and operates both meters and the lateral.
- 180 MDth/d maximum volume. Each meter can support the full load.
- Plant went in-service May 2022



Athens Station Upgrades

- Installed launcher and receiver traps at the station in order to segment a 270 mile pipeline (Joliet to Milford) into two smaller, more manageable sections.
 - Completed October 2021
 - Reduces risk during future inspection pig runs
 - Reduces duration of shut-ins to certain interconnections during pigging operations
 - Allows for more frequent cleaning pigs, if required
 - First pig run utilizing the new equipment performed in July 2022 (two cleaner pigs on the Athens to Milford segment)



Vector Pipeline™

Future Maintenance/Outages

- Reconfiguring of the Alliance and Northern Border metering and flow control (September 2023 tentative – more info on next slide)
- 2023 Valve replacement project in Canada
 - This affects a directly connected end-user. It may create an outage on the Canadian mainline - we are working with operations for a solution to minimize this outage.
- Cleaning pig run (1 or 2)
 - More than likely, just from Athens to Milford Junction
- Vector will continue its normal ongoing maintenance activities including thorough equipment testing and inspections. This work is usually performed without affecting firm transportation services.



Alliance and NBPL Meters

- Alliance and NBPL interconnections require modifications
 - Meters and flow control valves to be reduced in size due to the reduction in volume received
 - Tentative outage is three weeks of construction in September 2023
 - No flow from Alliance and Northern Border into Vector during this time
 - Guardian will be affected at the beginning and end of this project for a shorter outage when the cut-outs and tie-ins are being made
 - More detailed outage posting will be made in 2023



Guardian Interconnection

- Guardian and Vector determined the interconnect is capable of a higher volume.
 - Working with Guardian to amend the Interconnection Agreement to reflect the higher design capacity
 - Vector will soon be able to offer an additional 40 MDth/d at this interconnection.
- Mainline design capacity for winter, westbound flow conditions has been optimized with an incremental 34 MDth/d
- These increases will be placed on the market under a forthcoming Open Season



Vector Pipeline™

Operational Statistics

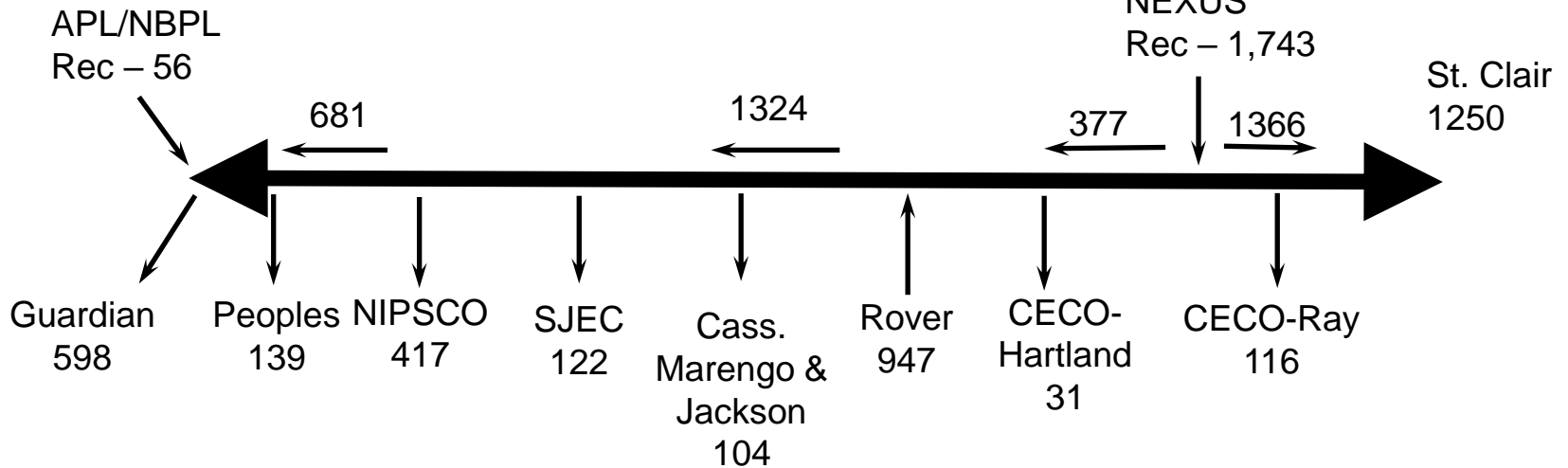


Vector Pipeline™

Winter Peak Day 2021/22

Winter 2021/22 System Peak – 2,778 MDth
January 10, 2022

Michigan
Receipts
Wash 10
Bluewater
DTE Gas/
NEXUS
Rec – 1,743



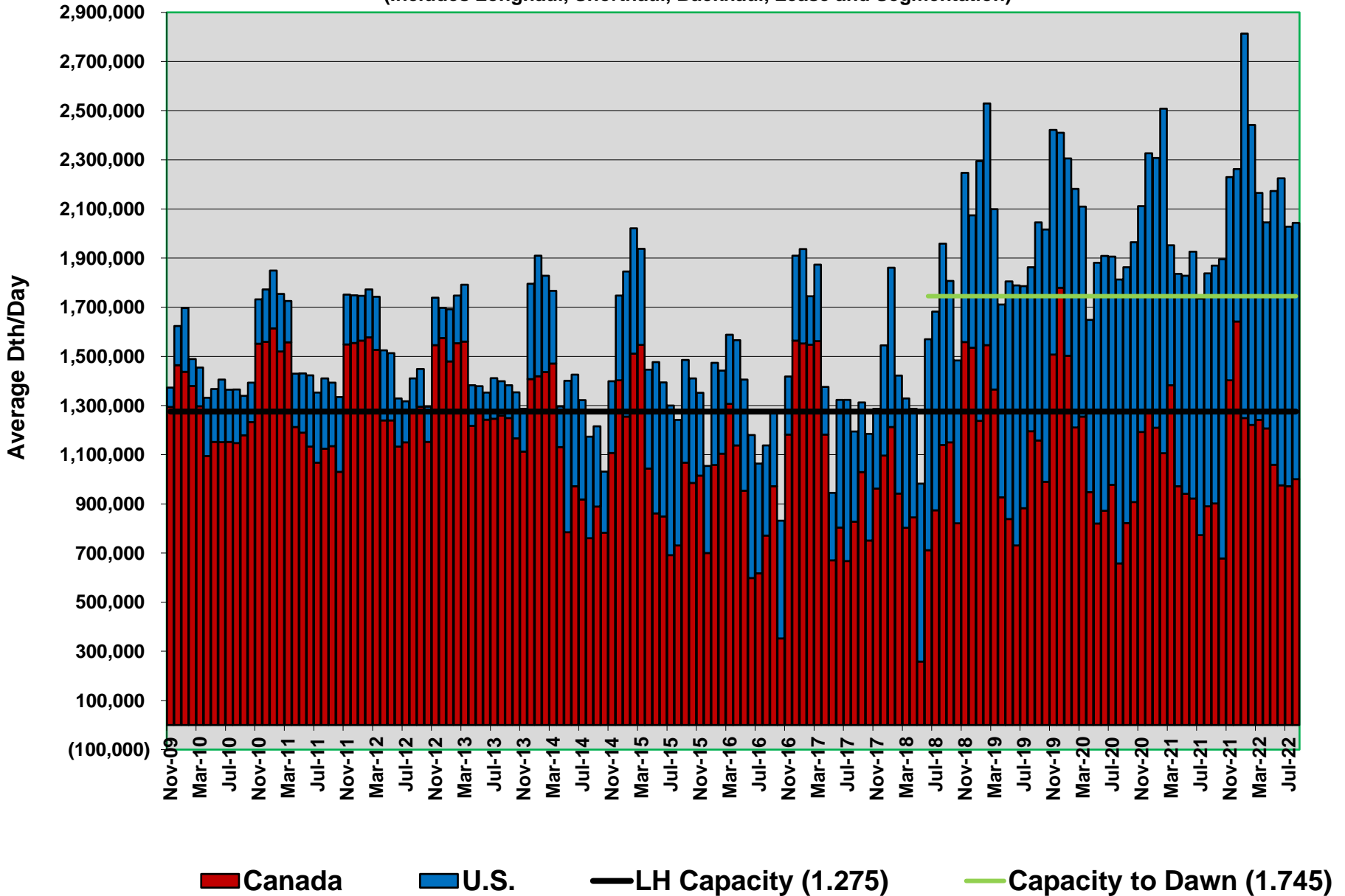
Temperature Range – S.E. Mich. (White Lake): 6°F to 17°F



Scheduled Deliveries

(Includes Longhaul, Shorthaul, Backhaul, Lease and Segmentation)

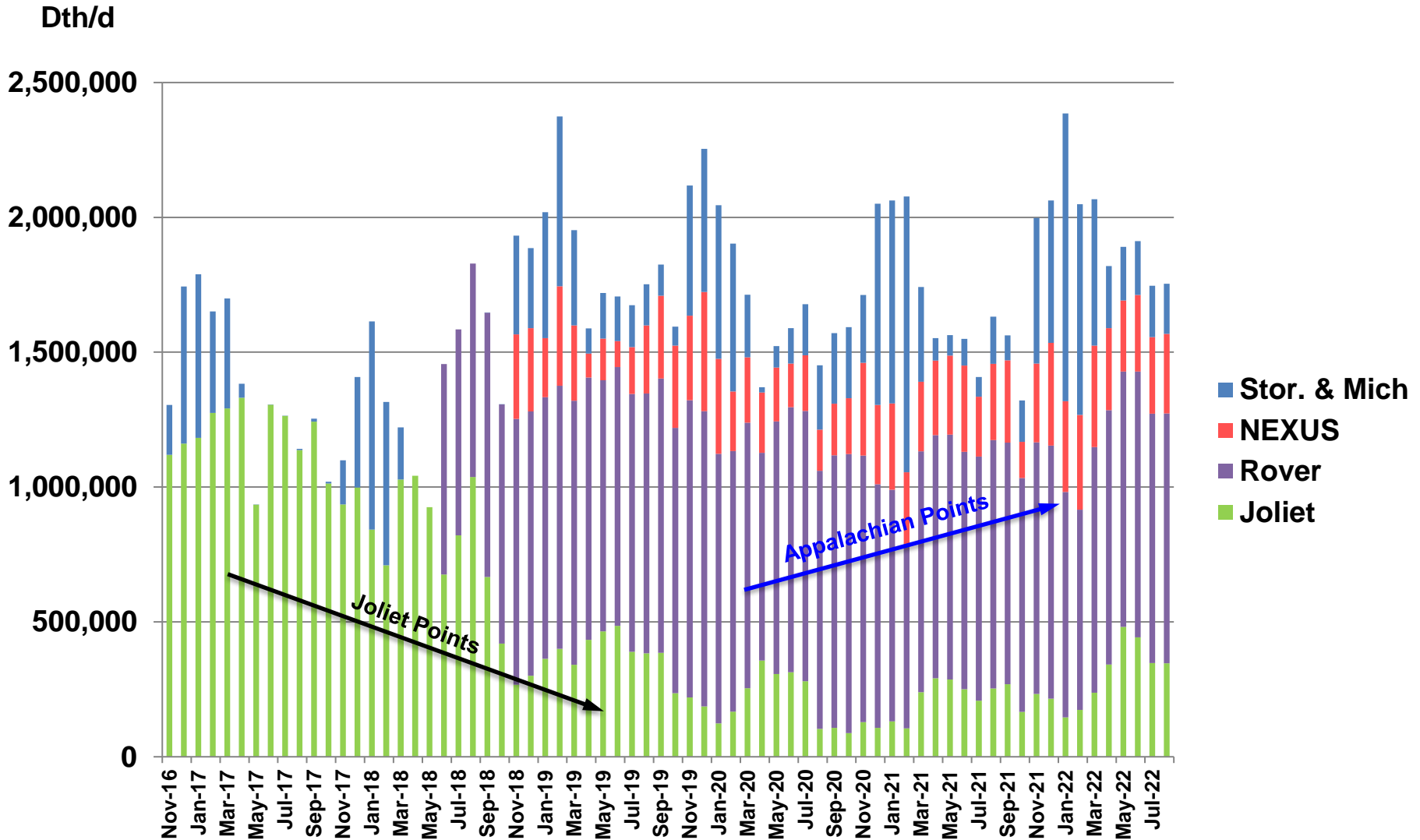
Vector Pipeline™





Vector Pipeline™

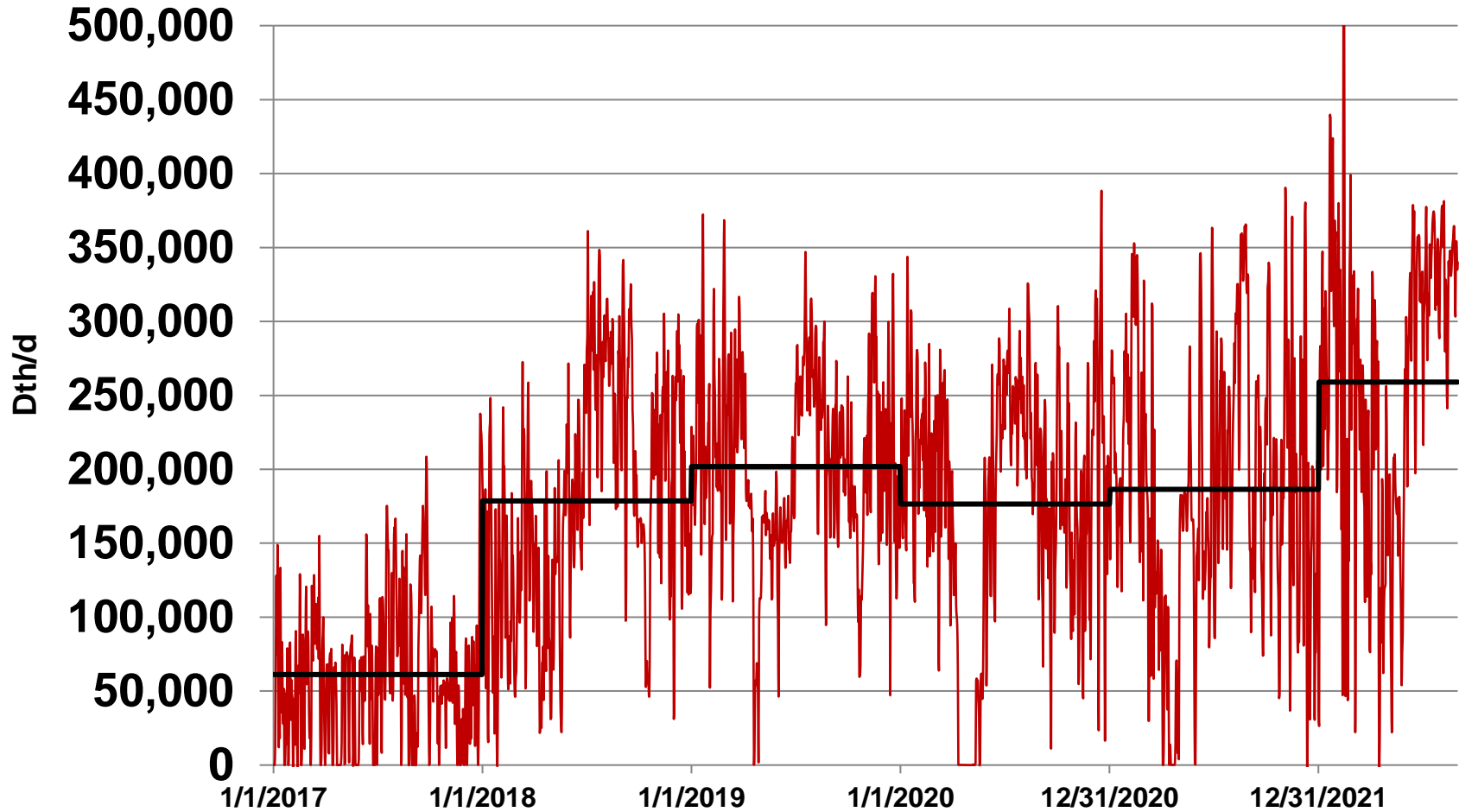
Receipts from Pipelines and Storage





Vector Pipeline™

Power Plant Consumption (with Annual Average)

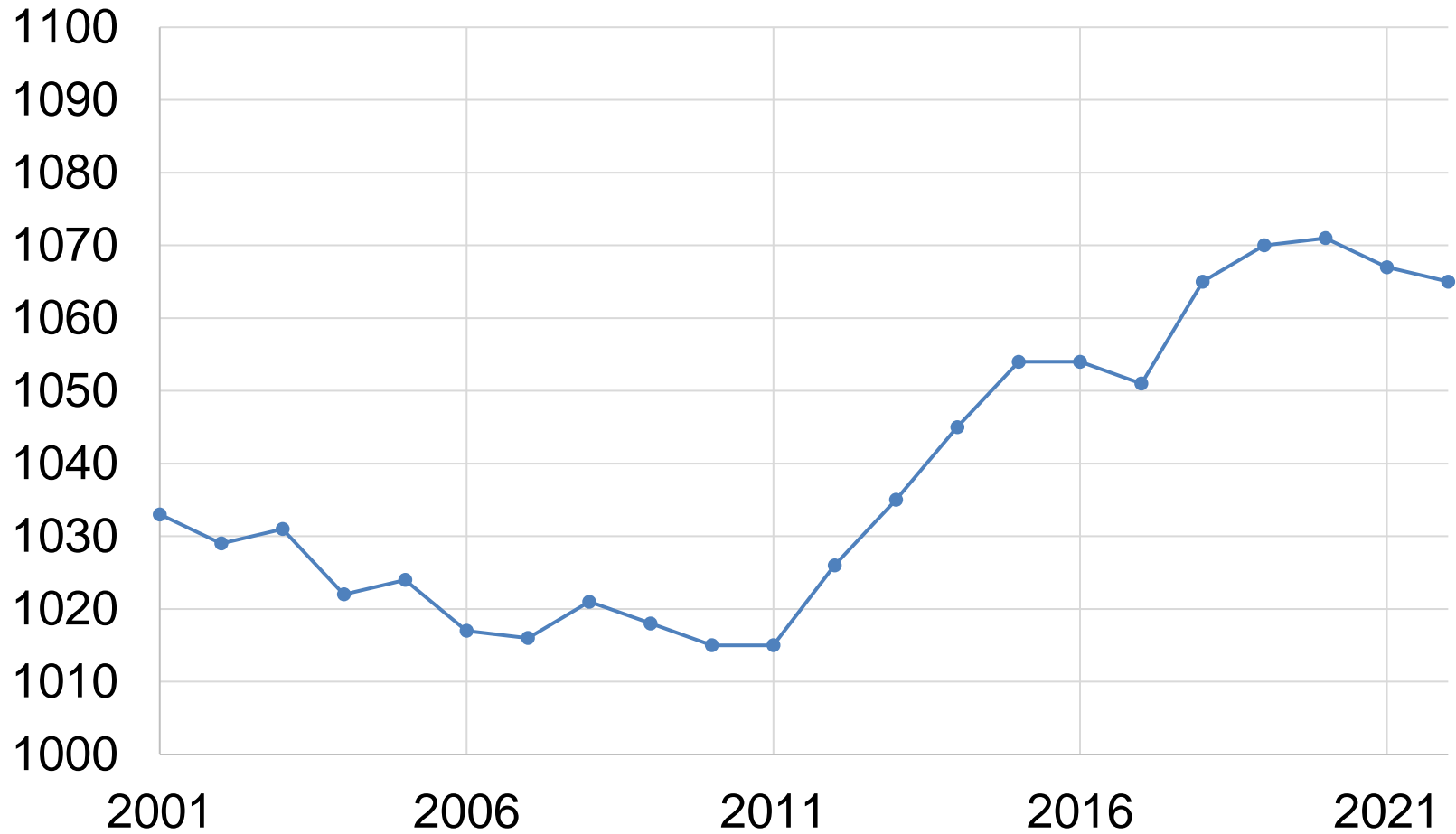




Vector Pipeline™

Historical BTU Content

(Btu/cf @ St. Clair)





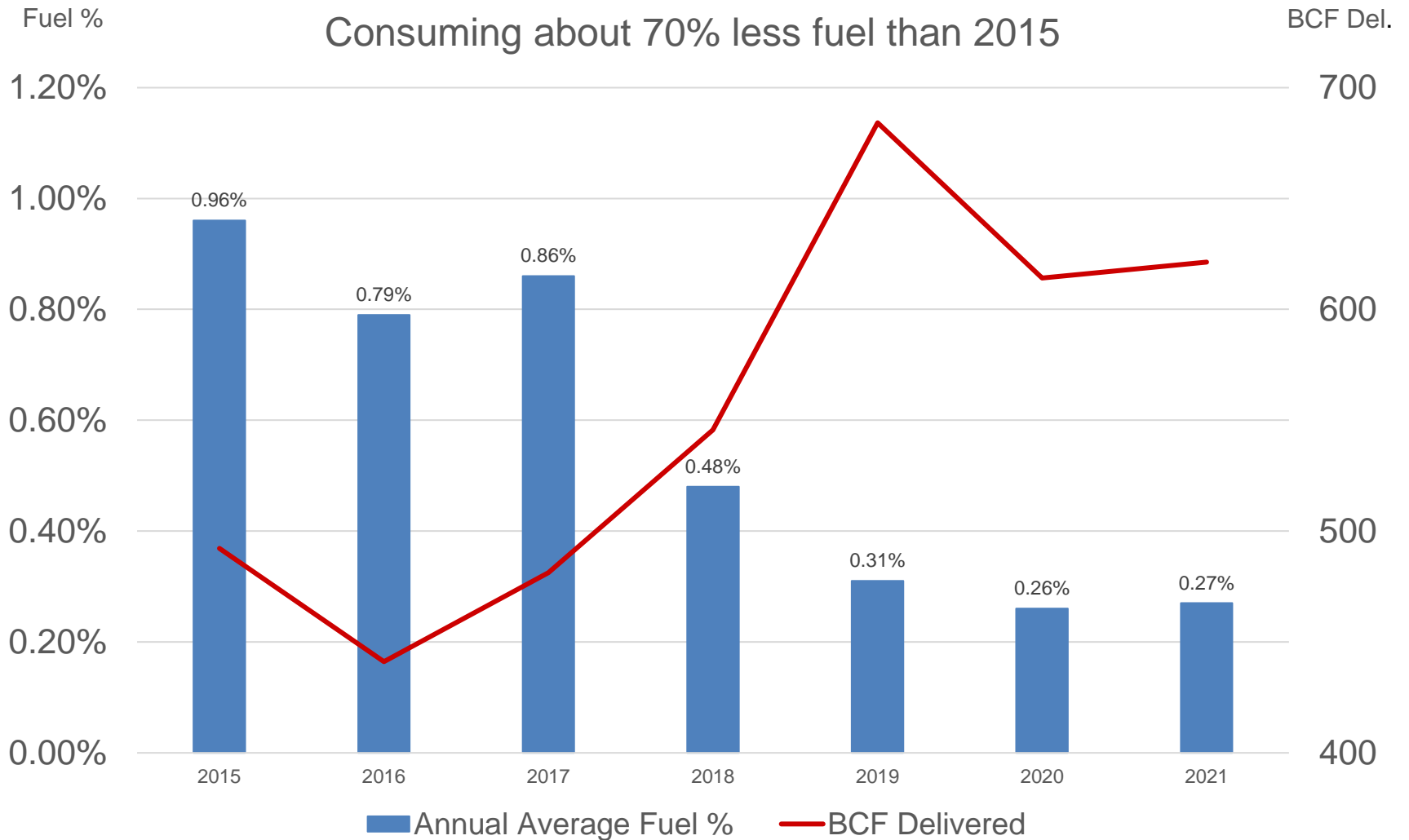
Vector Pipeline™

Operational Efficiency



Vector Pipeline™

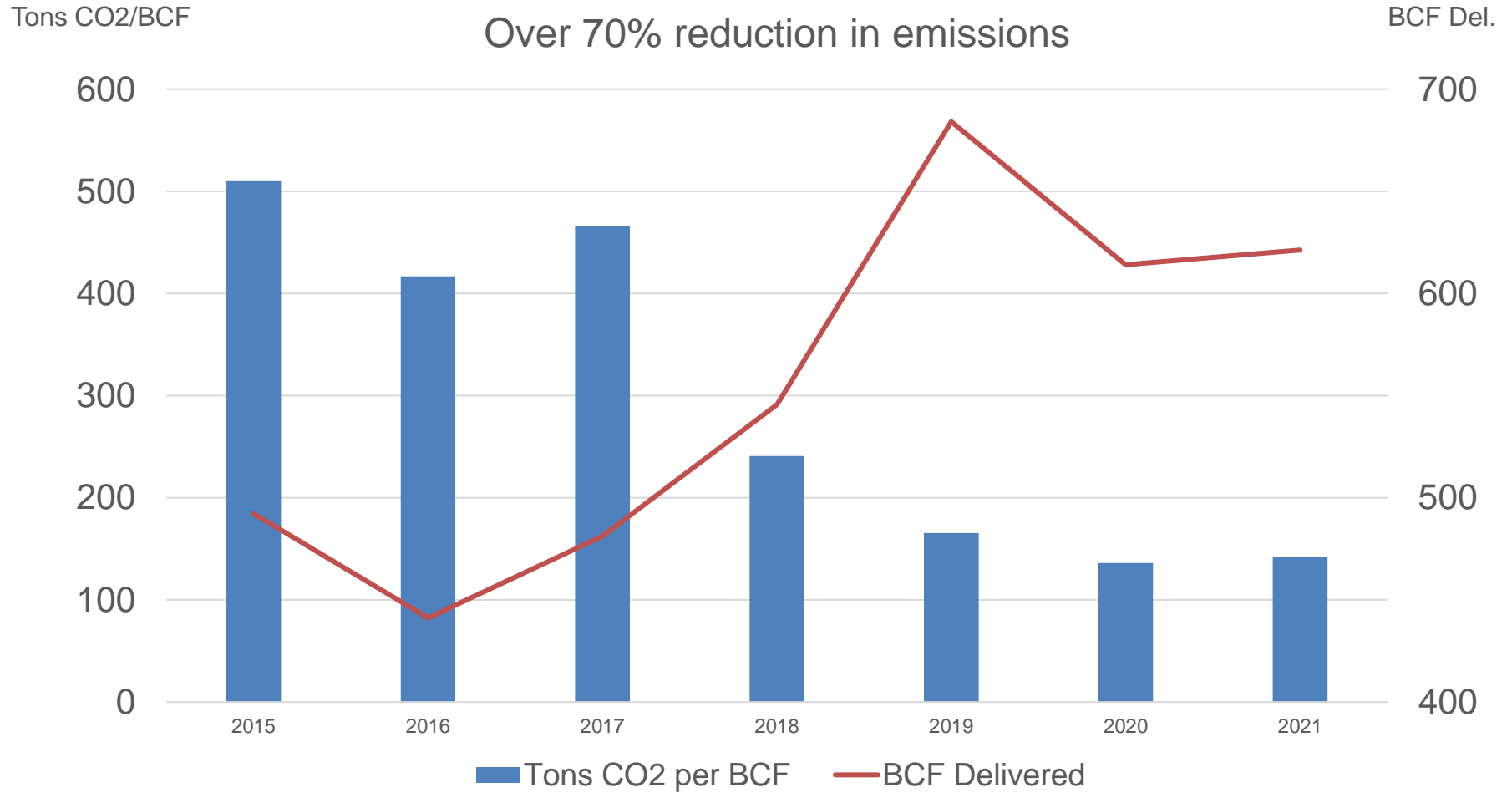
Reducing Fuel Consumption





Vector Pipeline™

Reduction in Greenhouse Gas





Vector Pipeline™

Mitigating Fugitive Emissions

- Dry Gas Seals on Compressors
- Minimize/Optimize Station Startups and Shutdowns
- Use of hot taps for new interconnects when applicable
- Convert high-bleed pneumatic actuators to low-bleed
- Redesign blowdown systems to reduce venting during testing – all stations have been converted
- Replace station fire alarm systems with more accurate detectors to prevent false alarms and emergency blowdowns



Mitigating Fugitive Emissions - Continued

- Methane abatement program being investigated to reinject gas normally vented in a compressor shutdown back into pipeline
 - Installing at Washington Compressor station in 2023
 - If successful, look to install at other stations in future years
- Other Green Initiatives
 - Participating in Electric Utilities Renewable Programs
 - Committed to purchase our electricity from green sources (primarily solar / wind)
 - 100% in Consumers Energy (Athens Station)
 - 100% in Indiana Michigan Power (Springville Station)
 - 25% in DTE Electric (Highland / Washington Stations)



Vector Pipeline™

Annual Canadian Toll Filing



Vector Pipeline™

Canadian Tolls

(\$ per Gj)

<u>Term</u>	<u>2022</u>	<u>2023*</u>
15-year	0.0063	0.0079
10-year	0.0072	0.0091
< 10-year & IT	0.0189	0.0237

* Projected 2023 Tolls – to be finalized December 2022



Vector Pipeline™

What's Next for Vector



Vector Pipeline™

RNG Gas

- Vector has developers interested in connecting Renewable Natural Gas (RNG) projects into the mainline. They are seeking customers to buy the gas.
- RNG is typically landfill gas or manure digestors from large dairy operations. Its is mostly dairy gas along Vector
- Known potential projects are in mid-Michigan and northern Indiana
- Very small receipt points – typically less than 1,000 Dth per day
- More to come!



Vector Pipeline™

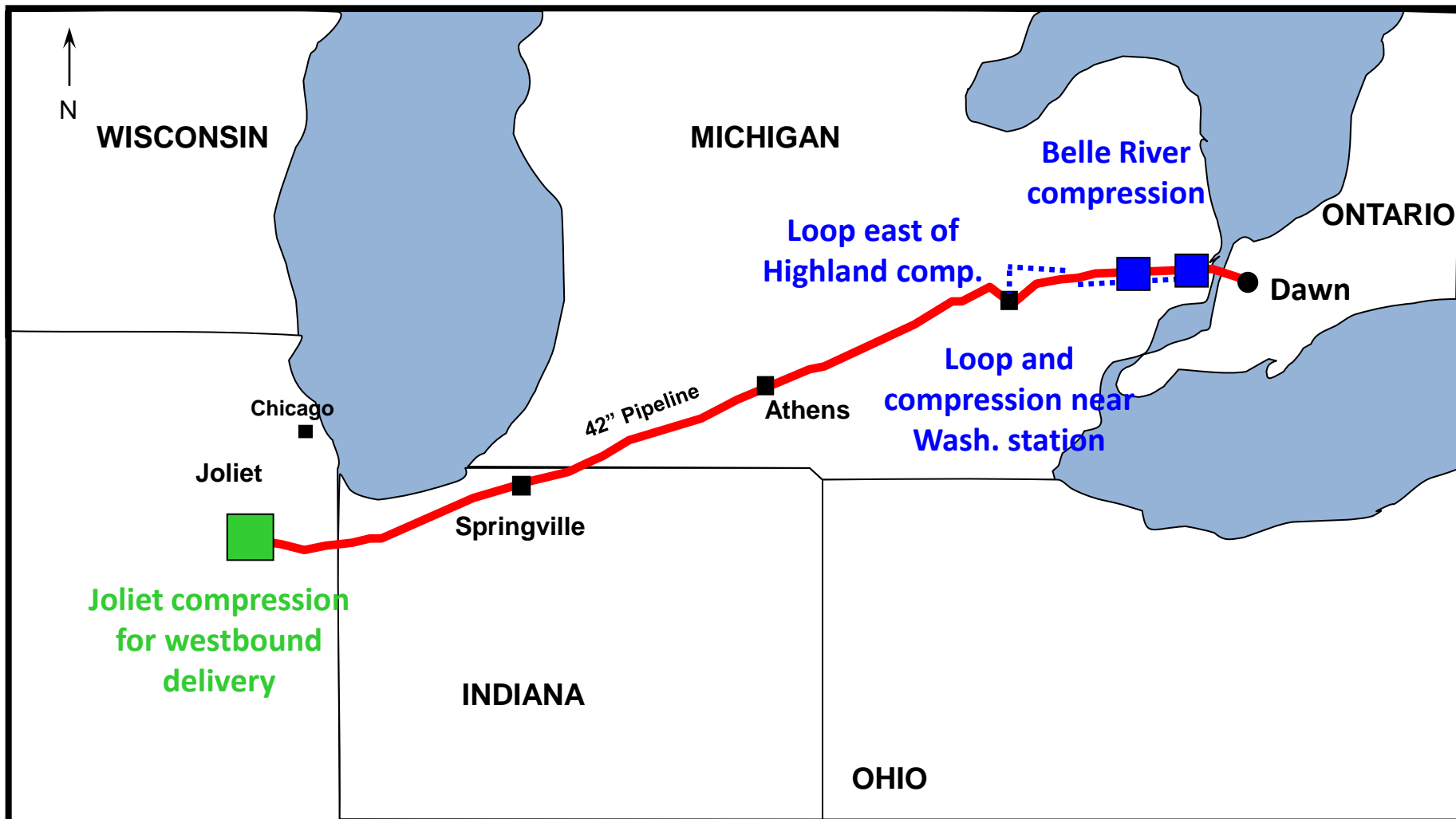
Potential Expansions

- Michigan-Dawn and Michigan-Chicago spreads are strong during the winter months
- Eastbound Expansions:
 - Vector can expand eastbound capacity from MI storage, Appalachian supply or Joliet to Dawn with the addition of loop and compression.
- Westbound Expansions:
 - The eastbound expansion facilities also increase our westbound capacity (MI Storage to Joliet markets)
 - Compression can be modified or added at Joliet to deliver Appalachian supply / MI storage services to markets west of Chicago (Northern Border markets)



Vector Pipeline™

Potential Expansion Facilities





Vector Pipeline™

Dennis Scheibe

Manager, Transportation Services



Vector Pipeline™

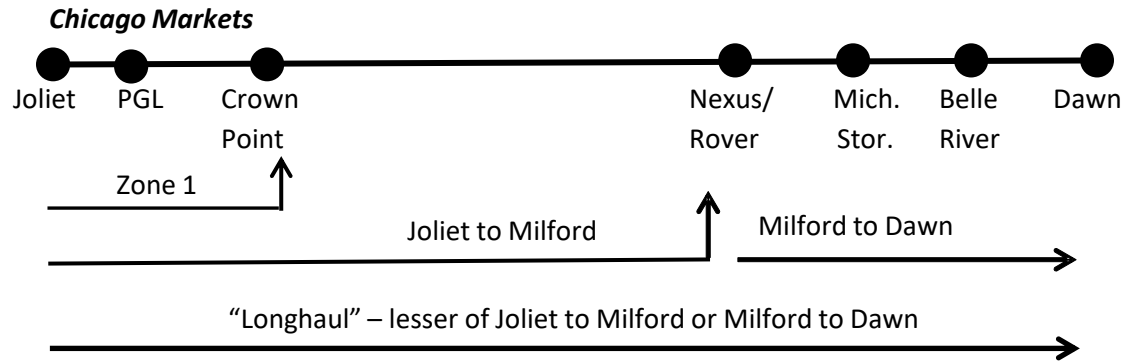
Capacity Postings



Vector Pipeline™

Mainline Capacity Segments

East Bound



West Bound





Example of Capacity Posting

PROJECTED IT AVAILABILITY

October 3, 2022

Note: Vector's "Traditional Joliet to Dawn" longhaul availability can be determined by using the lesser of the "Joliet to Milford Junction" or the "Rover to Dawn" segment.

Projected IT-1 by segment available October 3, 2022 (current day):

- Joliet to Crown Point 1,407,240
- Joliet to Milford Junction 624,194
- Rover to Dawn 624,194
- Milford Junction to Joliet 1,340,939

Projected IT-1 by segment available October 4, 2022:

- Joliet to Crown Point 1,153,578
- Joliet to Milford Junction 83,648
- Rover to Dawn 78,022
- Milford Junction to Joliet 1,066,145

*All volumes are in Dekatherms

Projected IT-1 available volumes are estimated based on current operational conditions and are made available solely for informational purposes only and nothing contained in this posting shall be construed as an offer of service. Vector does not guarantee the availability of IT-1 service to any party at any time.



Contract Path / Secondary Points

- Contract and flow patterns may limit Shippers' abilities to flow to secondary out-of-path points
- Secondary In-path: Between primary receipt and primary delivery and in the same direction at contract rate
- Secondary Out-of-Path: Outside of the primary receipt or delivery and/or in the opposite direction of the primary path.
 - Unless explicitly agreed to with Vector, secondary, out-of-path points are not discounted.



Daily Interruptible Transportation

- Capacity Posting Available 8:00 AM CT
- Vector Monitors Cash Trading – Set ND price by 9:30AM CT
- Path Specific IT Discounts
- E-mail confirmation outlining discount parameters
- Factors Impacting Scheduled IT Quantities:
 - Firm secondary nominations flowing same path as IT
 - Unanticipated max rate IT Nominations
 - Unplanned outages



Vector Pipeline™

Available Capacity



Vector Pipeline™

Winter Forward Spreads

as of September 30, 2022

	<u>W22/23</u>	<u>W23/24</u>	<u>W24/25</u>
Mich to Dawn	\$0.260	\$0.229	\$0.230
Mich to Chicago	\$0.659	\$0.624	\$0.687



Available East Bound Capacity (MDth/d)

Nov22 Apr23 Nov23 Apr24

From Joliet:

Zone 1 Delivery	335	399	335	399
Milford Delivery	229	171	229	203
Dawn Delivery	0	0	0	45



Vector Pipeline™

Available West Bound Capacity Delivery to Chicago (MDth/d)

W22/23 W23/24 W24/25 W25/26

From Milford or Rover:	34*	77	167	177
From Dawn or Mich Storage:	0	0	0	44

Note: Open season coming soon for W22/23 capacity and will be coincident with Guardian meter expansion. Parameters TBD



Available Delivery Point Capacity (MDth/d)

	<u>W22/23</u>	<u>W23/24</u>	<u>W24/25</u>	<u>W25/26</u>
Guardian	40	83	109	162
Peoples Smith Road	59	59	83	83
NIPSCO Crown Point	501	501	541	541

Note: Deliveries to Alliance and Northern Border by displacement only

Other Marketable Capacity

- Rover or Milford to Hartland
- Dawn to MI Storage
- MI Storage to Dawn
- Dawn to Joliet
- Deliveries to MGU Marshall or SEMCO
Cassopolis
- Park and loan



Vector Pipeline™

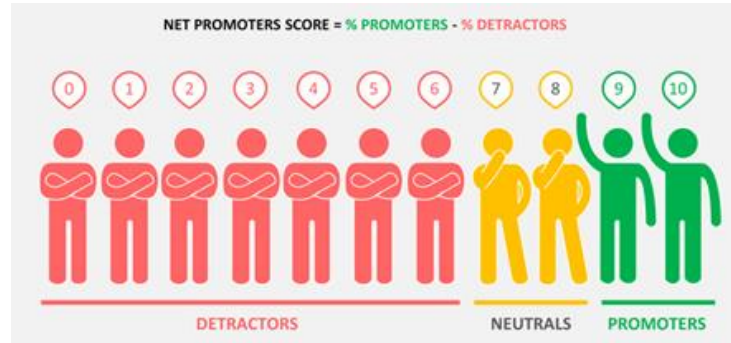
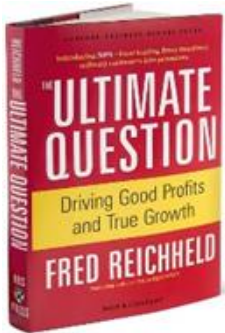
Customer Service Update



Vector Pipeline™
2000-2020

The Net Promoter Score

A Key Piece in Maximizing Performance



What is it:

NPS determines the % of promoters and detractors each supplier has within its respective industry.

Based on:

“How likely would you recommend to a colleague or another business”...

Benefits:

• Unlike Customer Satisfaction, there is a strong correlation to financial performance.

Promoters: Loyal, invested customers

Passives: Neutral, not fully invested

Detractors: Dissatisfied



Vector Pipeline™

Net Promotor Score Overview

2022 Mastio Survey

Promoters

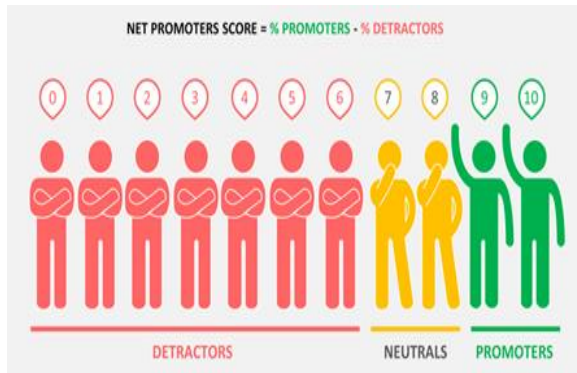
Loyal, invested customers. They stay longer, buy more and recommend you.

Passives

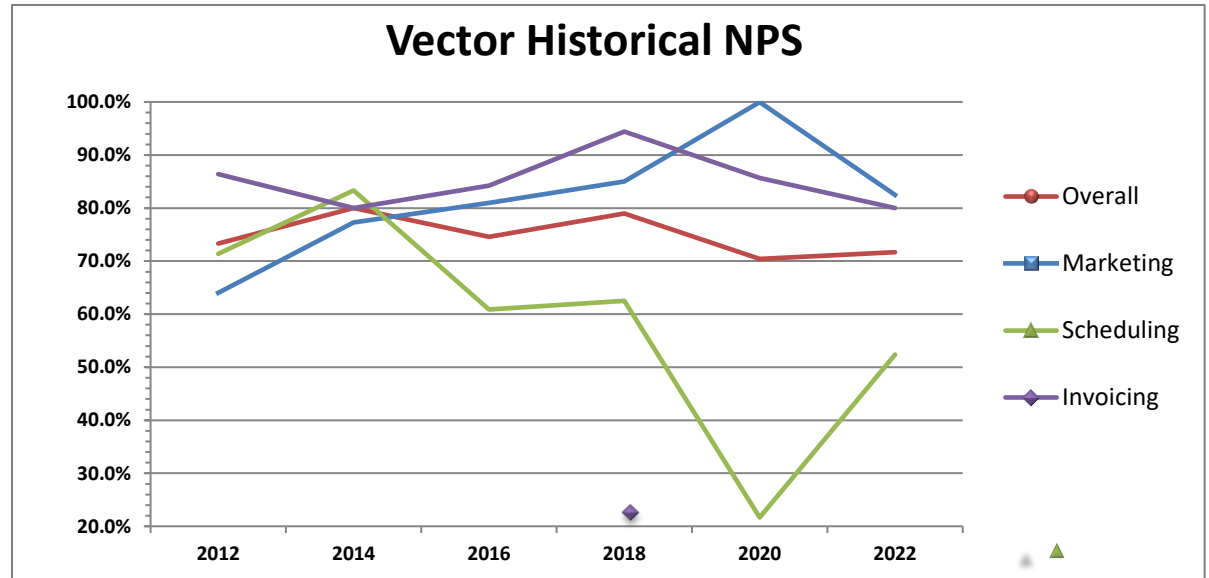
Neutral, not fully invested. Could be easily attracted with a better offer.

Detractors

Dissatisfied. More likely to defect and recommend AGAINST your company.



Vector	# of Observations	% of Promoters	% of Detractors	% of Passives	NPS
Marketing	29	83%	0%	17%	82.8%
Invoicing	10	80%	0%	20%	80.0%
Overall	60	75%	3%	22%	71.7%
Scheduling	21	62%	10%	29%	52.4%





Scheduling Performance Comparison

Scheduling	2022 Score	2020 Score	Difference	% Change
Easy to contact the right person for help.	9.00	7.71	1.29	16.8%
Expertise of personnel.	8.79	7.61	1.18	15.5%
Quality of pipeline initiated communications.	9.00	7.81	1.19	15.2%
Problems are resolved timely.	9.00	7.91	1.09	13.7%
Representatives who listen well.	9.22	8.32	0.90	10.9%
Personnel respond quickly to requests.	9.11	8.22	0.89	10.8%
Ease of doing business.	8.90	8.13	0.78	9.6%
Scheduled gas volumes are accurate.	9.14	8.46	0.68	8.1%
Simple and straightforward capacity release system and procedures.	8.82	8.65	0.17	2.0%
Ease of use of QuickNom system.	9.00	8.85	0.15	1.7%
Operational information is readily available.	8.76	8.65	0.11	1.3%
Ease of the pipelines system for nominating and reporting.	8.85	8.75	0.10	1.1%
Ease of use of Vector's website.	8.61	8.58	0.03	0.3%
Timely notification before initiating restrictions.	8.85	9.00	-0.15	-1.7%
How likely would you be to recommend this company?	8.67	8.00	0.67	8.3%



Vector Pipeline™

Weekly On Call Posting



Vector Pipeline®

Vector US Pipeline

- Powered by QuickNom™

System Time: 02:41:08 PM Central Time
Statement Date/Time: 09/30/2022 02:40:47 PM

[Gas Scheduling Contacts](#)

Currently logged in as: Dennis Scheibe
TSP Name/TSP: Vector Pipeline L.P./87-913-6682

Welcome to Vector QuickNom system. Please choose a link from left navigation.

Nominations

- [Nomination](#)
- [Confirmation](#)
- [Scheduled Quantity](#)
- [Submit Nomination](#)
- [EDI Confirmations](#)

Flowing Gas

- [Pre-determined Allocation](#)
- [Allocation Imbalance](#)
- [Measurement](#)
- [Measurement by Date](#)

Invoicing

- [Invoice](#)
- [Month To Date Invoice](#)
- [Generate Invoice](#)

Capacity Release

- [Offers](#)
- [Bids](#)
- [Awards](#)
- [Pre-approved Bidders](#)
- [Recall Capacity](#)
- [Reput Capacity](#)

Contracts

- [Contracts](#)

Reports

- [Hourly Operations Rpt](#)
- [Location Summary Rpt](#)
- [NCSQ Report](#)
- [US/CAN Sched Qty. Comparison](#)
- [Scheduled Summary Report](#)
- [PAL Balances](#)
- [Projected PAL Balances](#)
- [Other Reports](#)

Admin

- [Roles](#)

Gas Scheduling Contacts September 30 - October 6, 2022

Hot Line: (713) 627-6076 Email: transerv@enbridge.com

Confirmation/Scheduling Inquiries all Cycles: Joel Russ ICE Chat: joruss

(Monday – Sunday, 9:30 AM CST – 9:30 PM CST)

End of Day/Retros/General Inquiries: Kim Olinger ICE Chat: kolinger2

(Monday – Friday, 6:30 AM CST – 4:00 PM CST)

If a timely response is not received, please escalate to:

damita.porter@enbridge.com (weekdays)

james.cymes@enbridge.com (weeknights/weekend)



Vector Pipeline™

Vector Scheduling Team

Primary Weekdays

Carlo Conte

Backup Weekdays

Kenneth Glover

Rotating Nights/Weekends

Nikki Wooley

Joel Russ

Weekday Manager

Damita Porter

Night/Weekend Manager

James Cymes



QuickNom Enhancements

Internal tools to simplify and improve the accuracy of Vector's confirmation process:

- US/CAN Border Confirmations
- Title Transfer Nominations

External Changes

- Monthly Invoice Emails Consolidated
- CSV Downloads for Monthly Invoices
- System notices



Vector Pipeline™

Future Improvements

- Data archiving to improve performance
- Improve format of invoices and backup schedules



Vector Fuel Rates

- Rates change monthly which include a tracker that reconciles fuel imbalance
- 2 components: LUF and mileage-based fuel
- Backhaul fuel rate is LUF only
- LUF component has been increasing slightly
- Tariff deadline is posting 7 days prior to end of month
- Goal is to have rates posted a few days before deadline



Vector Pipeline™

Vector Marketing

We are available for any type of one-on-one meeting:

- Vector's office is open for visitors
- Willing to travel to your office or neutral site
- Virtual MS Teams meeting – Vector overview or detailed project related discussions.
- Connect with Matt or Dennis to schedule
 - Matt (734) 276-6189
 - Dennis (734) 210-8481



Vector Pipeline™

**Questions
?**



Vector Pipeline™

Thank You!
We appreciate your business!