



**Vector Pipeline™**

# **Vector Pipeline**

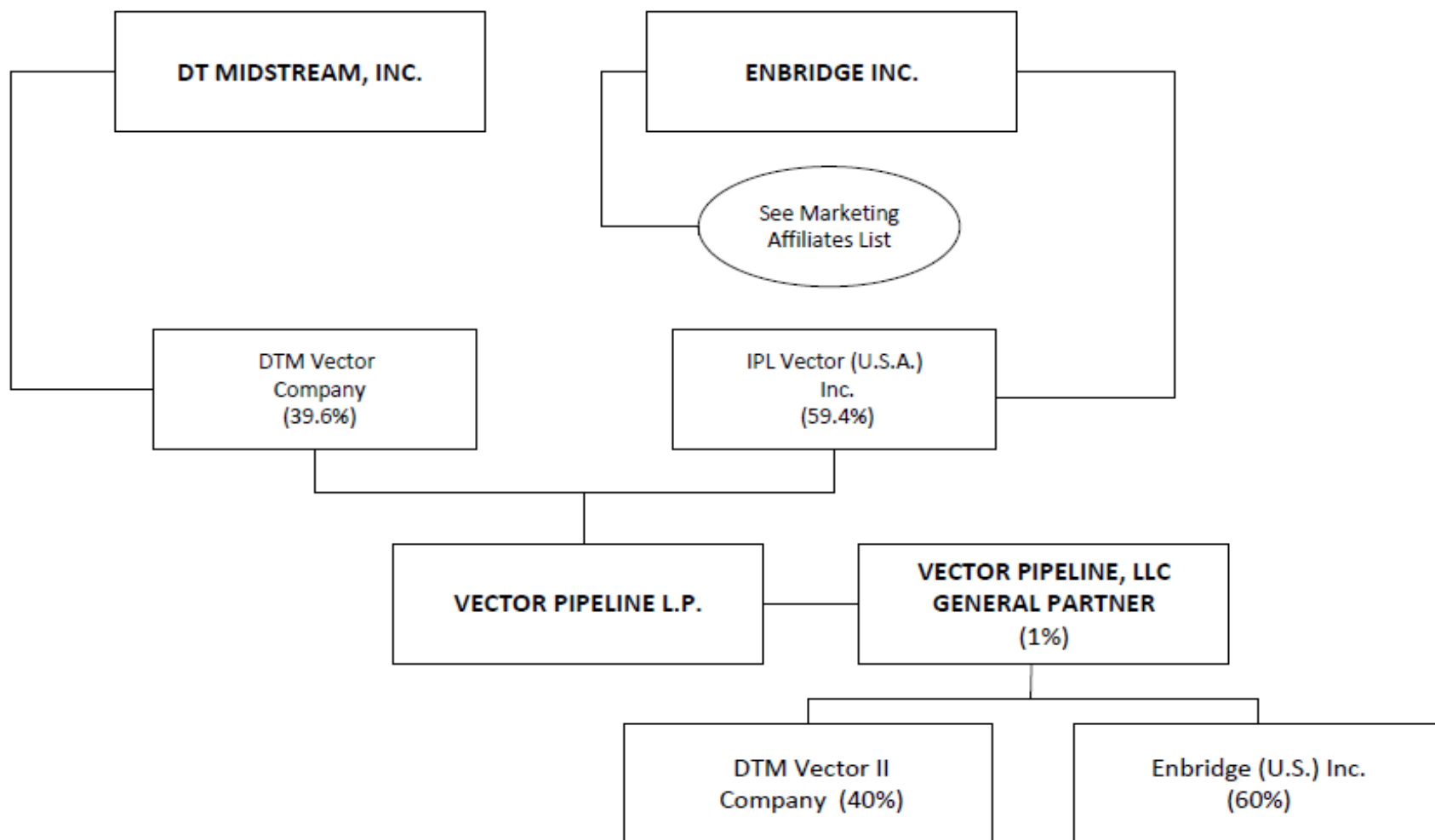
**Customer Meeting**

**October 10, 2024**

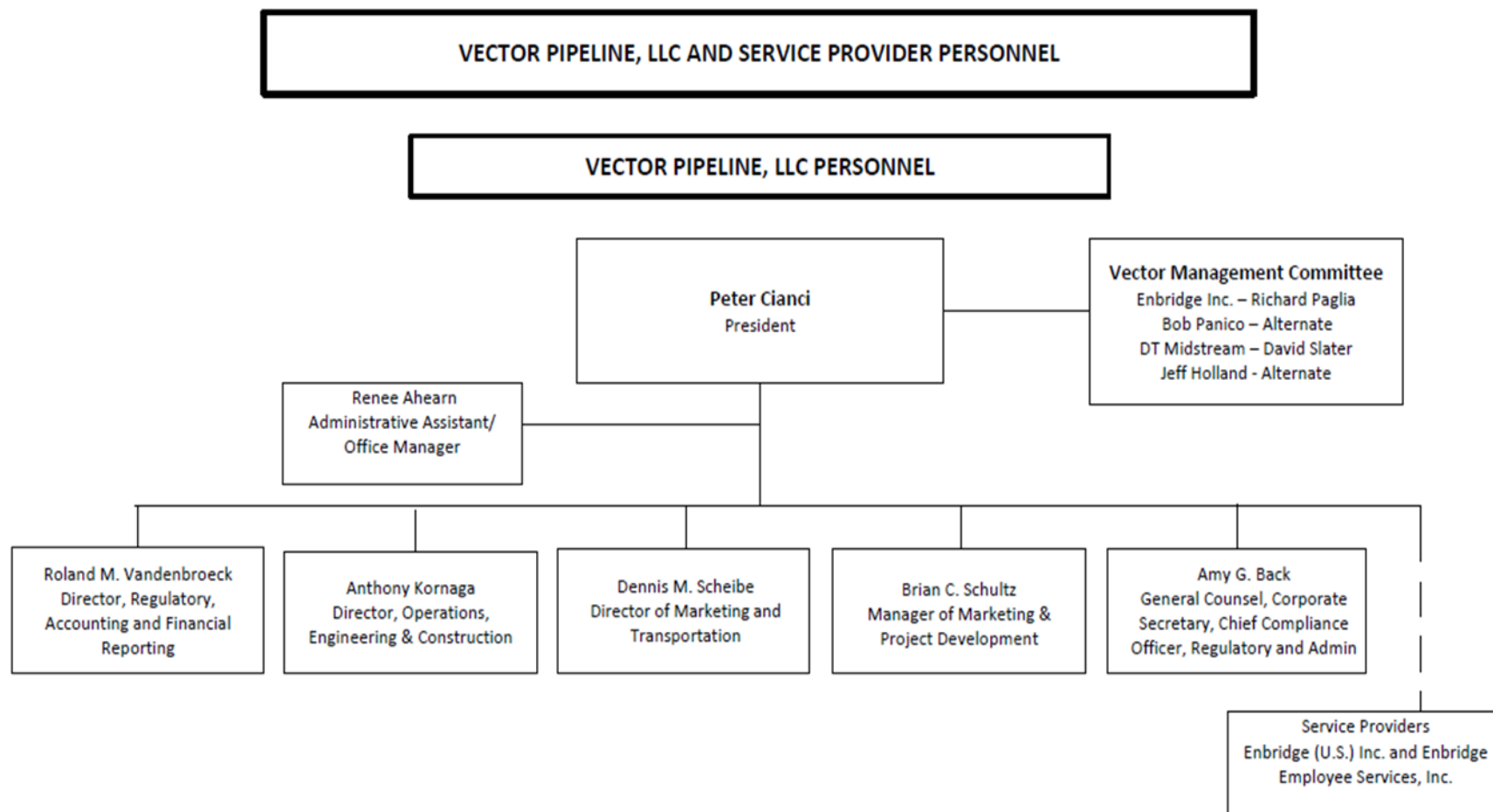
**Arizona Biltmore Resort**

**Phoenix, AZ**

# Partnership Structure



# Organization Chart





**Vector Pipeline™**

# **Dennis Scheibe**

## **Director, Marketing & Transportation**



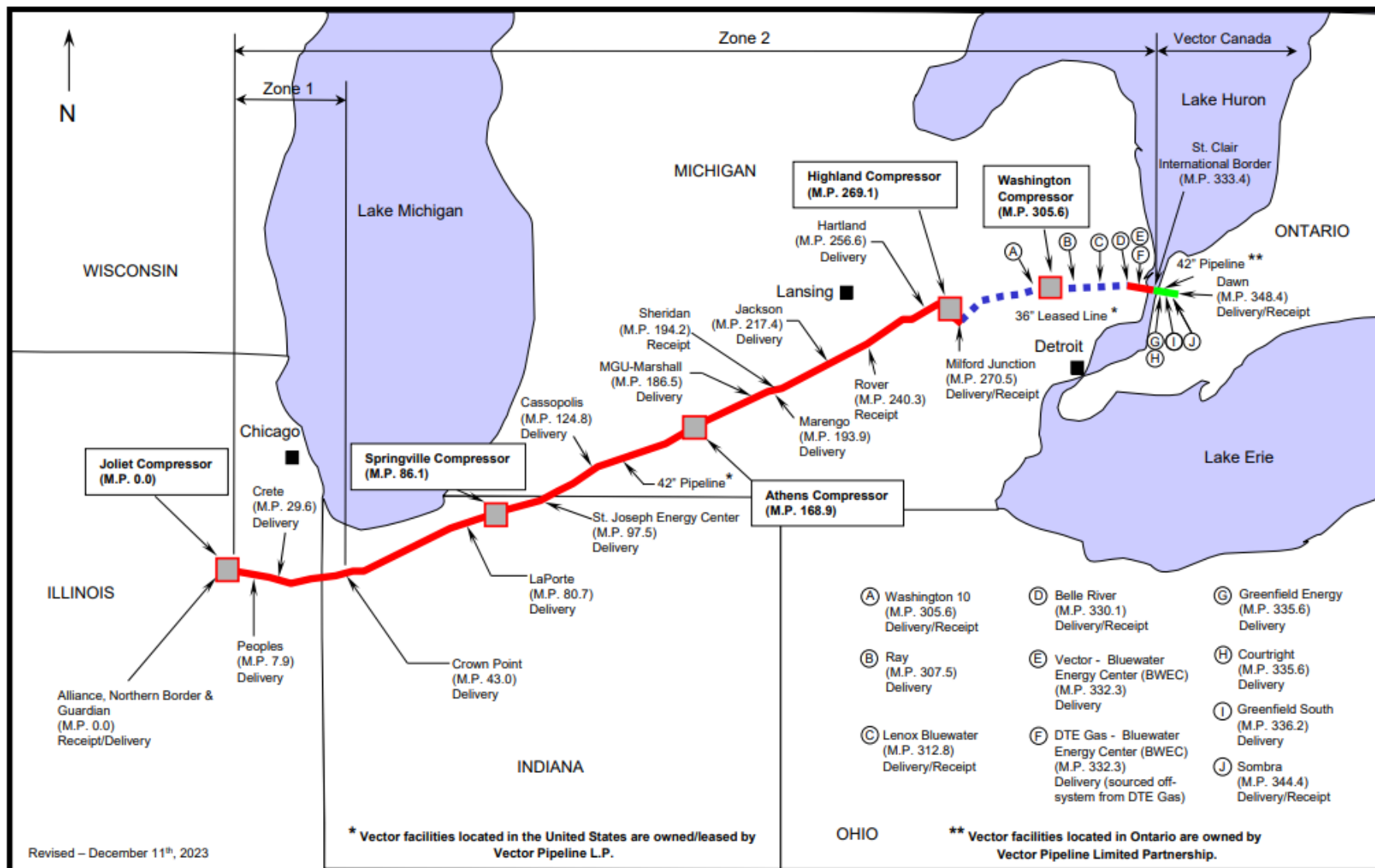
**Vector Pipeline™**

# **Operations, Performance and Efficiency**



# Vector Pipeline System Map

Vector Pipeline™



# 2024 Outage Recap

- Cleaning pig run
  - One cleaning pig run on Athens to Milford segment on June 12<sup>th</sup>
  - Reduced to 1 cleaning run vs 2 in previous years
- Consumers Ray Interconnect
  - Unscheduled outage on Sept 5<sup>th</sup> and 6<sup>th</sup> for flow control valve maintenance
  - No impact to firm services
- Washington Unit 100 & 200 Pressurized Hold install
  - Pressurized hold system for GHG reduction, install Oct 14<sup>th</sup> through 27<sup>th</sup>
  - No firm transport impact
- Highland Unit 200 engine changeout (not scheduled previously)
  - Scheduled Nov 4<sup>th</sup> through 10<sup>th</sup>
  - No impact to firm services
- Other routine maintenance completed throughout the year with no impact to firm services

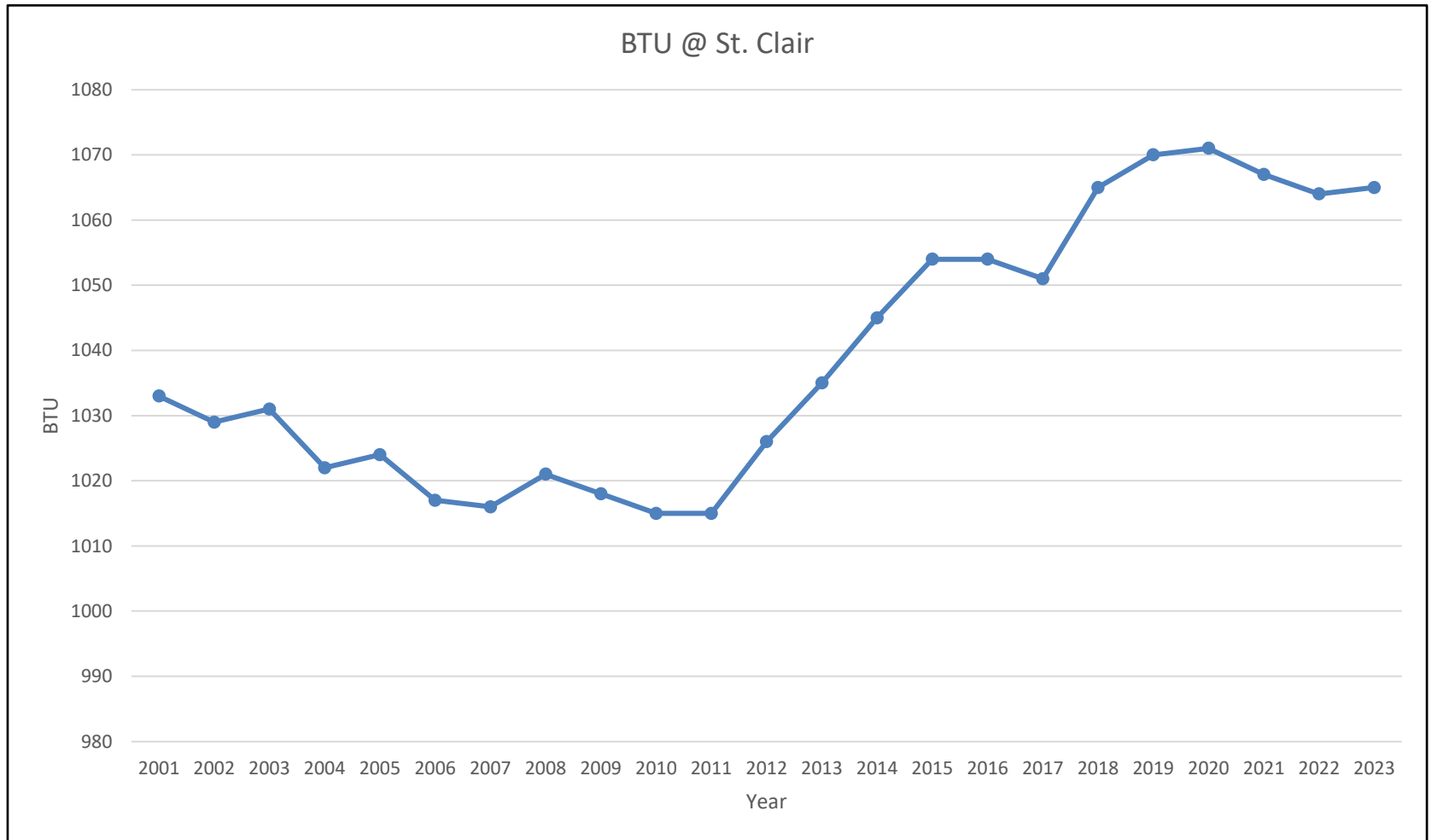
# 2025 Maintenance

- Cleaning pig run
  - 1 cleaning pig on Athens to Milford segment
- No other major outages planned at this time for 2025
- Continue normal ongoing maintenance activities including thorough equipment testing and inspections at opportune times without impacting firm transportation services.

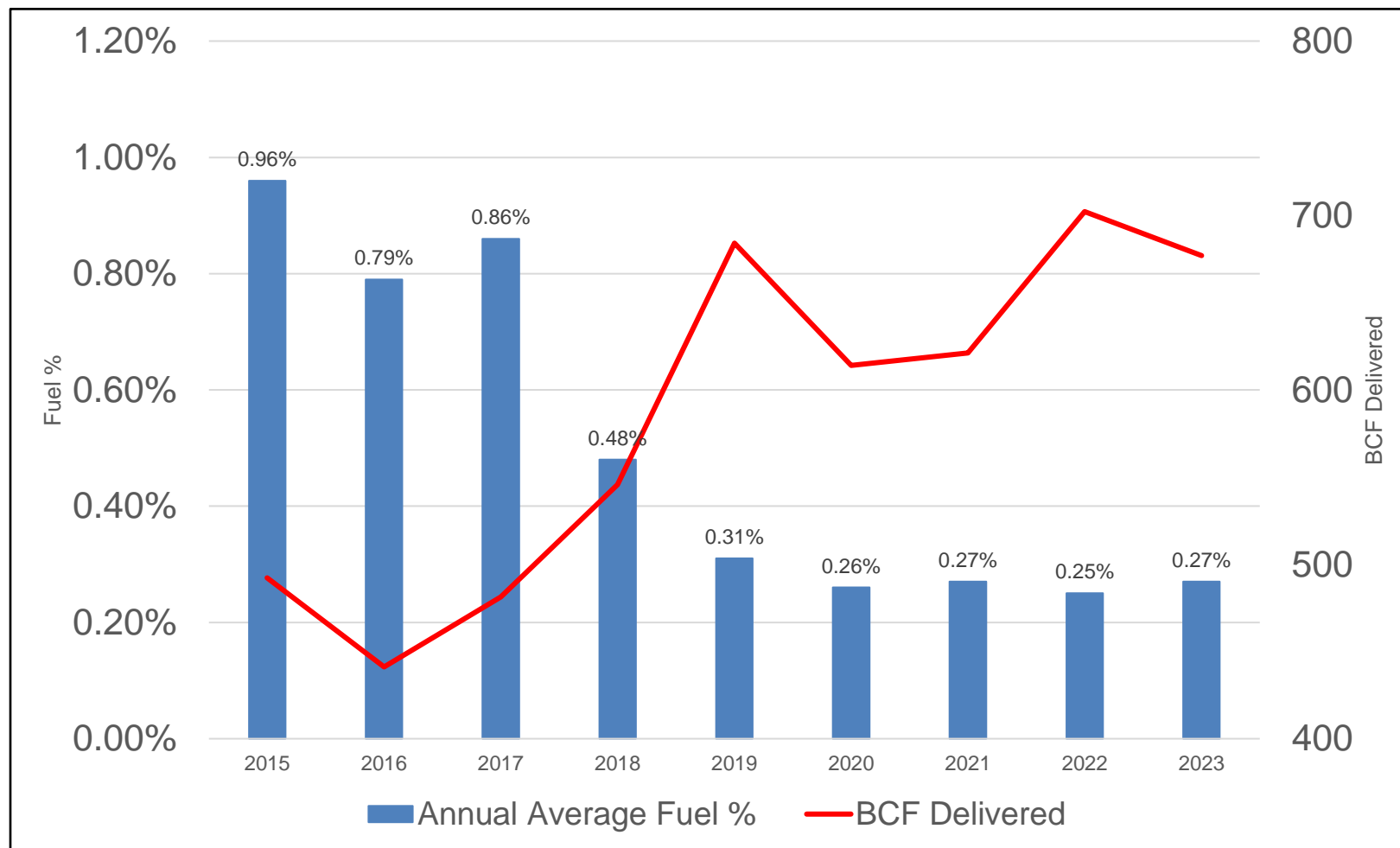




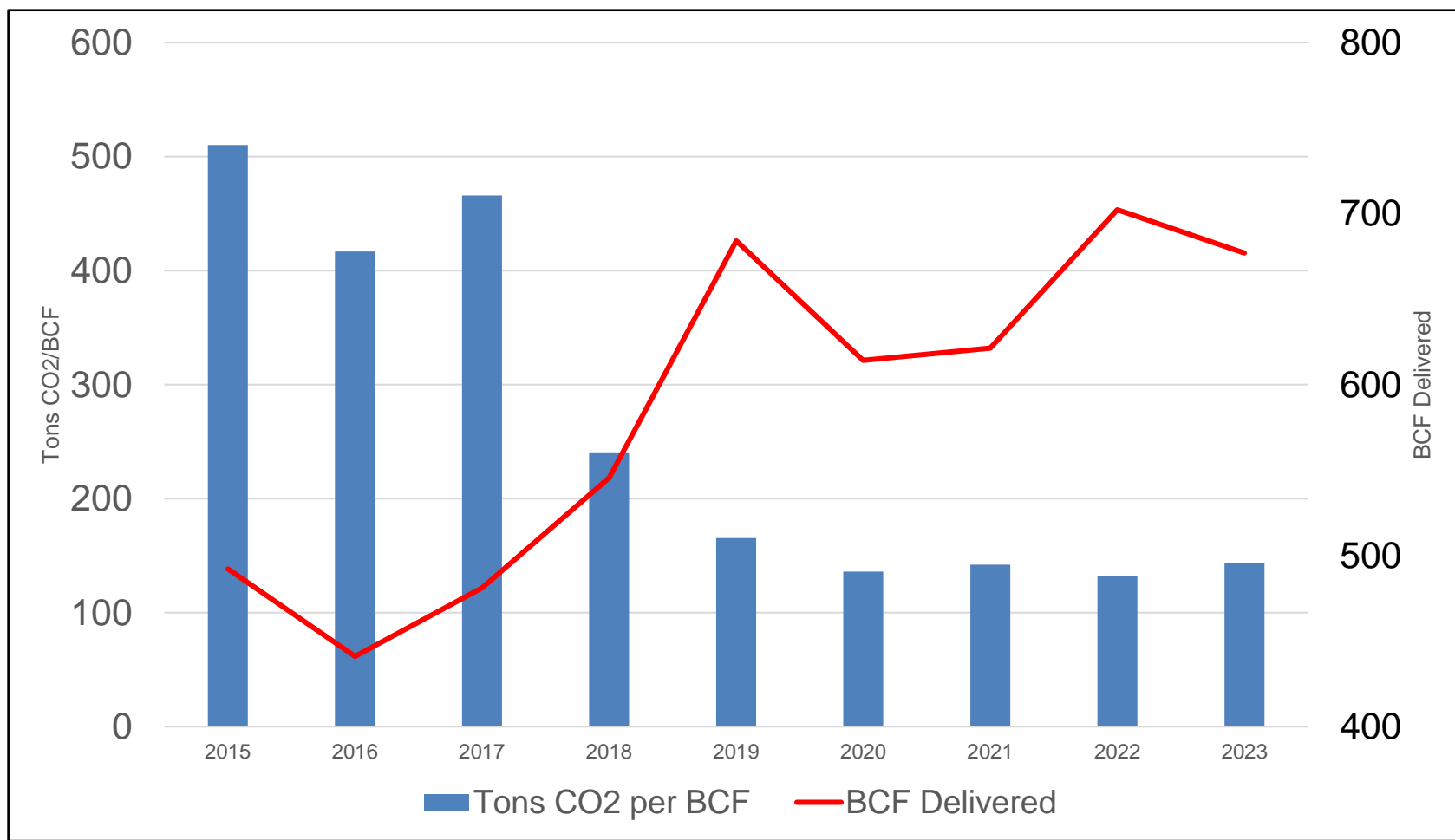
# Historical BTU Content



# Reducing Fuel Consumption



# Greenhouse Gas (GHG) Reduction



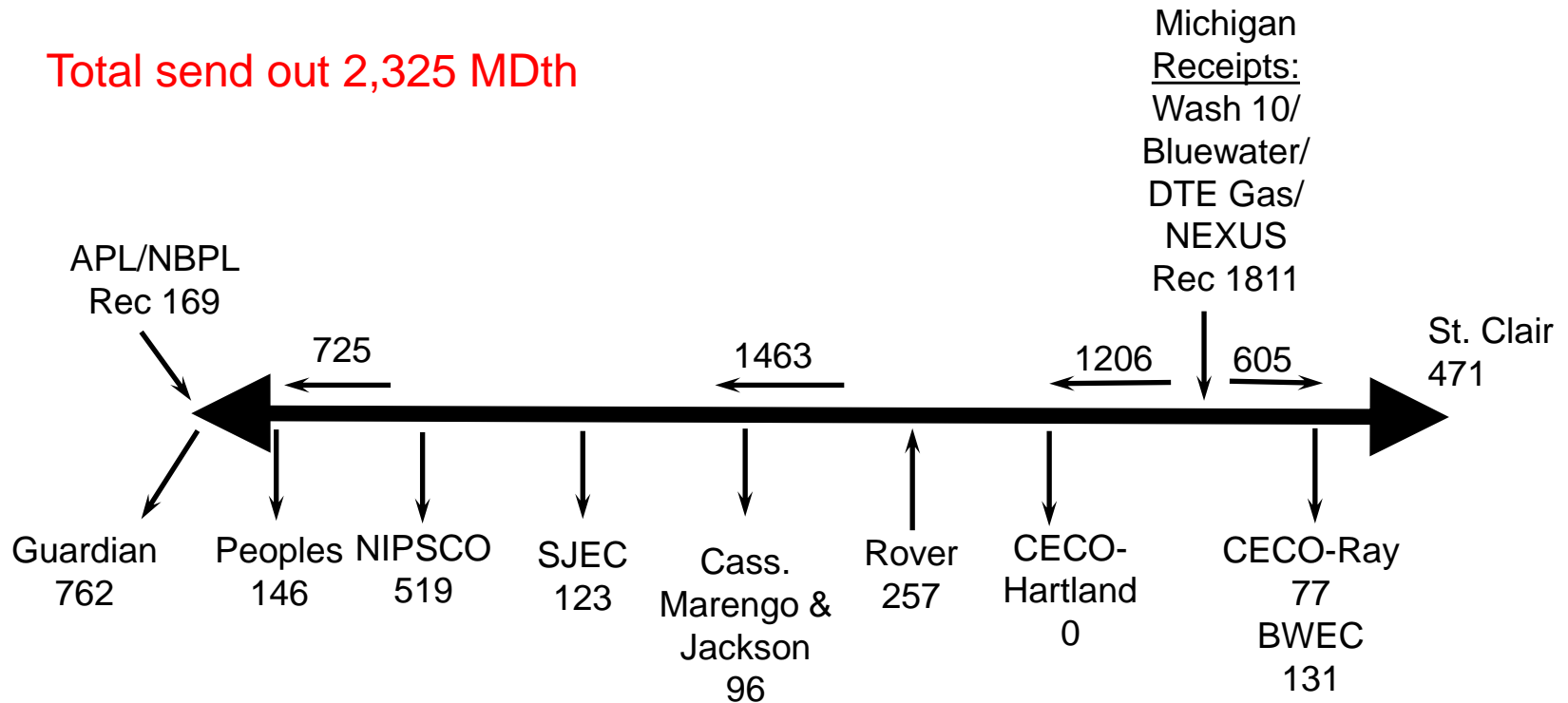
# Past Peak Day Volume by Year

<u>Date</u>	<u>MDth</u>
January 7, 2014	2,341
February 20, 2015	2,216
March 13, 2016	1,594
January 6, 2017	2,189
January 4, 2018	2,057
January 31, 2019	2,971
December 18, 2019	2,702
February 7, 2021	2,361
January 10, 2022	2,778
January 31, 2023	2,721
January 14, 2024	2,325

# Winter Peak Day 2023/24

January 14<sup>th</sup>, 2024

Total send out 2,325 MDth



Temperature Range – S.E. Mich. (White Lake): 0°F to 12°F

# January 13-16, 2024 Overview

- Vector met all firm primary obligations
- No unplanned operational issues
- Pipeline performed well and was prepared in advance for increase in Chicago market deliveries
- Increased utilization of DTE's firm backhaul agreement from Belle River to Milford Junction
- Over-nominated in the west bound direction resulting in cuts to firm secondary out of path/direction noms

# Helpful Hints for Critical Day Nominations

- Know your contract's Primary Receipt/Delivery Points
- Nominate firm primary path in timely cycle
- Nominate firm secondary out of path/direction in timely cycle
- If possible, roll nom through ID-1 cycle
- Allocation probable for out of path/direction noms

# QuickNom Peak Day Issue

- Alliance issued Action Alert Notice related to system imbalances
- Vector at max capacity in westbound direction
- Shippers nominated Alliance to Dawn IT service
- The EB IT nominations increased WB capacity
- EB IT noms were reduced in intra-day cycles
- Resulted in being over capacity in WB direction
- QN fixed to schedule EB and WB capacity separately





**Vector Pipeline™**

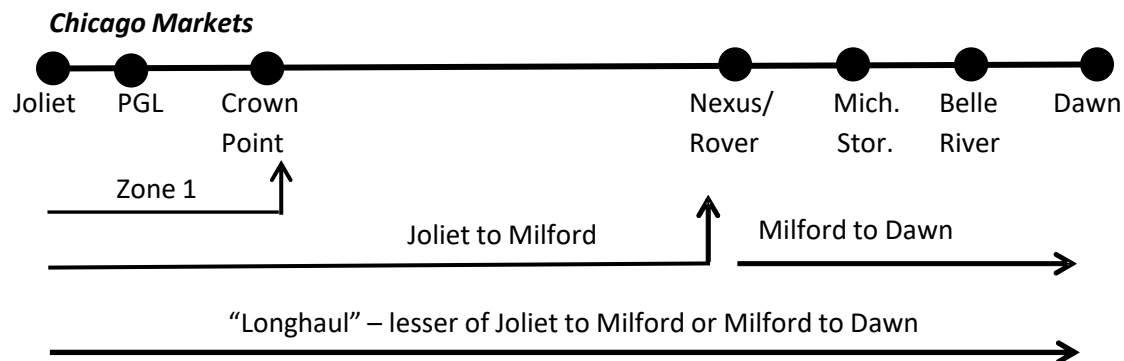
# **Daily Interruptible Capacity**



Vector Pipeline™

# Mainline Capacity Segments

East Bound



West Bound





# Example of Capacity Posting

## PROJECTED IT AVAILABILITY

**September 20, 2024**

Note: Vector's "Traditional Joliet to Dawn" longhaul availability can be determined by using the lesser of the "Joliet to Milford Junction" or the "Rover to Dawn" segment.

Projected IT-1 by segment available September 20, 2024 (current day):

- |                              |           |
|------------------------------|-----------|
| • Joliet to Crown Point      | 1,308,171 |
| • Joliet to Milford Junction | 1,308,171 |
| • Rover to Dawn              | 812,746   |
| • Milford Junction to Joliet | 1,165,047 |

Projected IT-1 by segment available September 21 - 23, 2024:

- |                              |           |
|------------------------------|-----------|
| • Joliet to Crown Point      | 1,056,318 |
| • Joliet to Milford Junction | 1,019,413 |
| • Rover to Dawn              | 25,818    |
| • Milford Junction to Joliet | 873,043   |

\*All volumes are in Dekatherms

Projected IT-1 available volumes are estimated based on current operational conditions and are made available solely for informational purposes only and nothing contained in this posting shall be construed as an offer of service. Vector does not guarantee the availability of IT-1 service to any party at any time.

# Daily Interruptible Transportation

- Vector Monitors Cash Trading – Set ND price by 9:30AM CT
- Path Specific IT Discounts
- E-mail confirmation outlining discount parameters
- Factors Impacting Scheduled IT Quantities:
  - Firm secondary nominations flowing same path as IT
  - Unanticipated max rate IT Nominations
  - Unplanned outages

# Contract Path / Secondary Points

- Contract and flow patterns may limit Shippers' abilities to flow to secondary out-of-path points
- Secondary In-path: Between primary receipt and primary delivery and in the same direction at contract rate
- Secondary Out-of-Path: Outside of the primary receipt or delivery and/or in the opposite direction of the primary path.
  - ***Unless explicitly agreed to with Vector, secondary, out-of-path points are not discounted.***



**Vector Pipeline™**

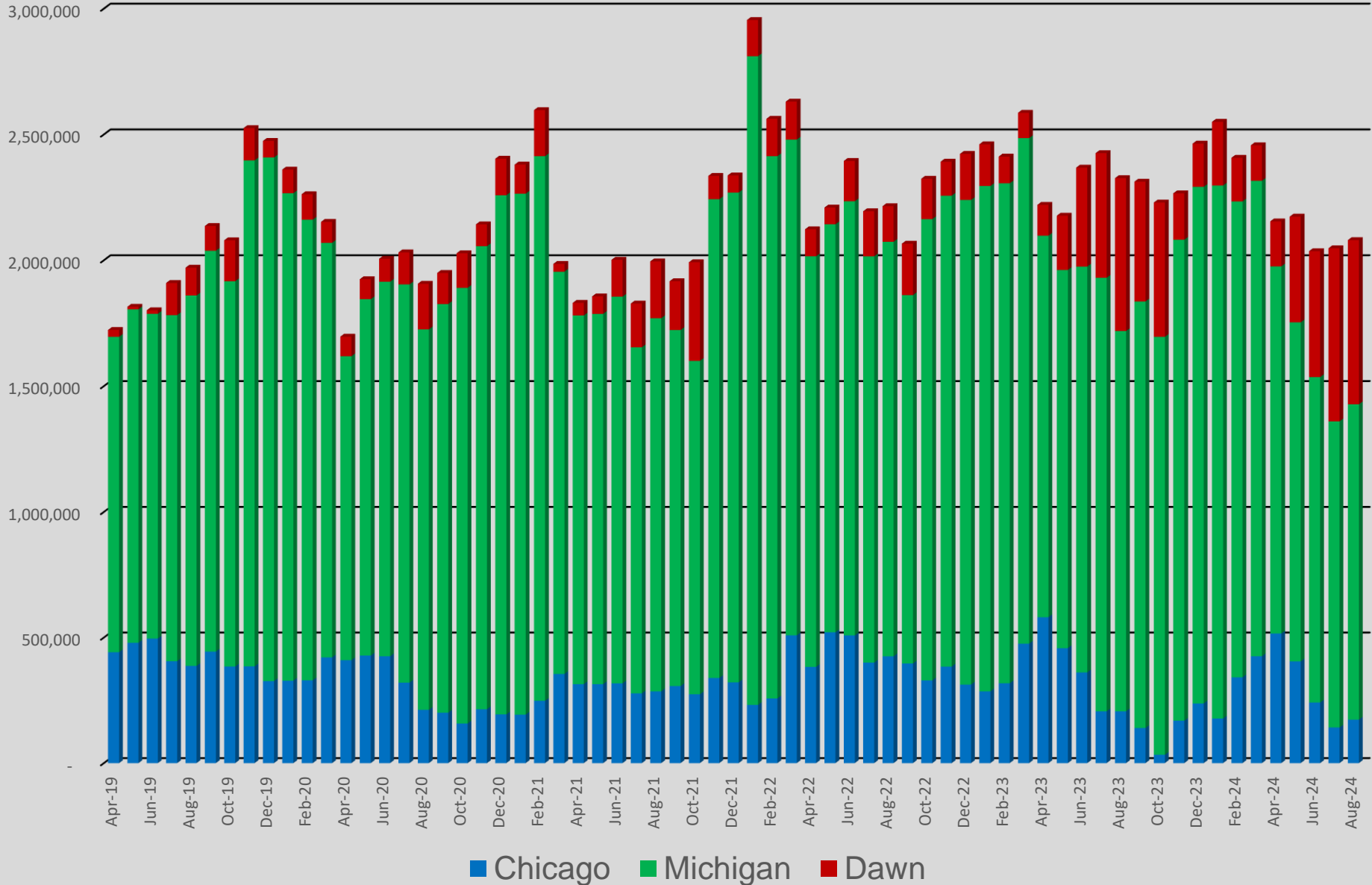
# Nomination Activity



Vector Pipeline™

# Average Monthly Nominated Receipts

April 2019-August 2024

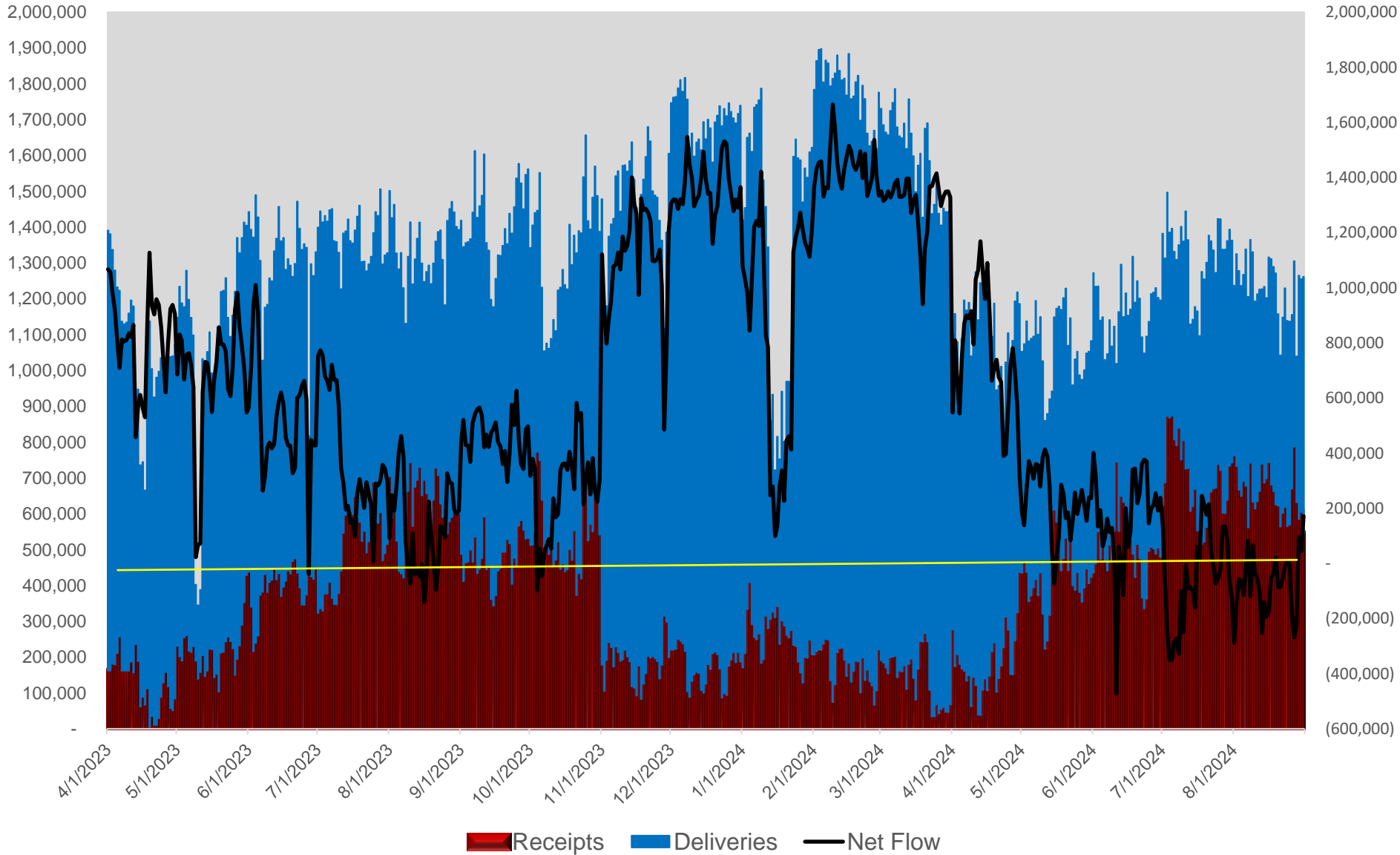




Vector Pipeline™

# Dawn Net Nominations

April 2023 - August 2024



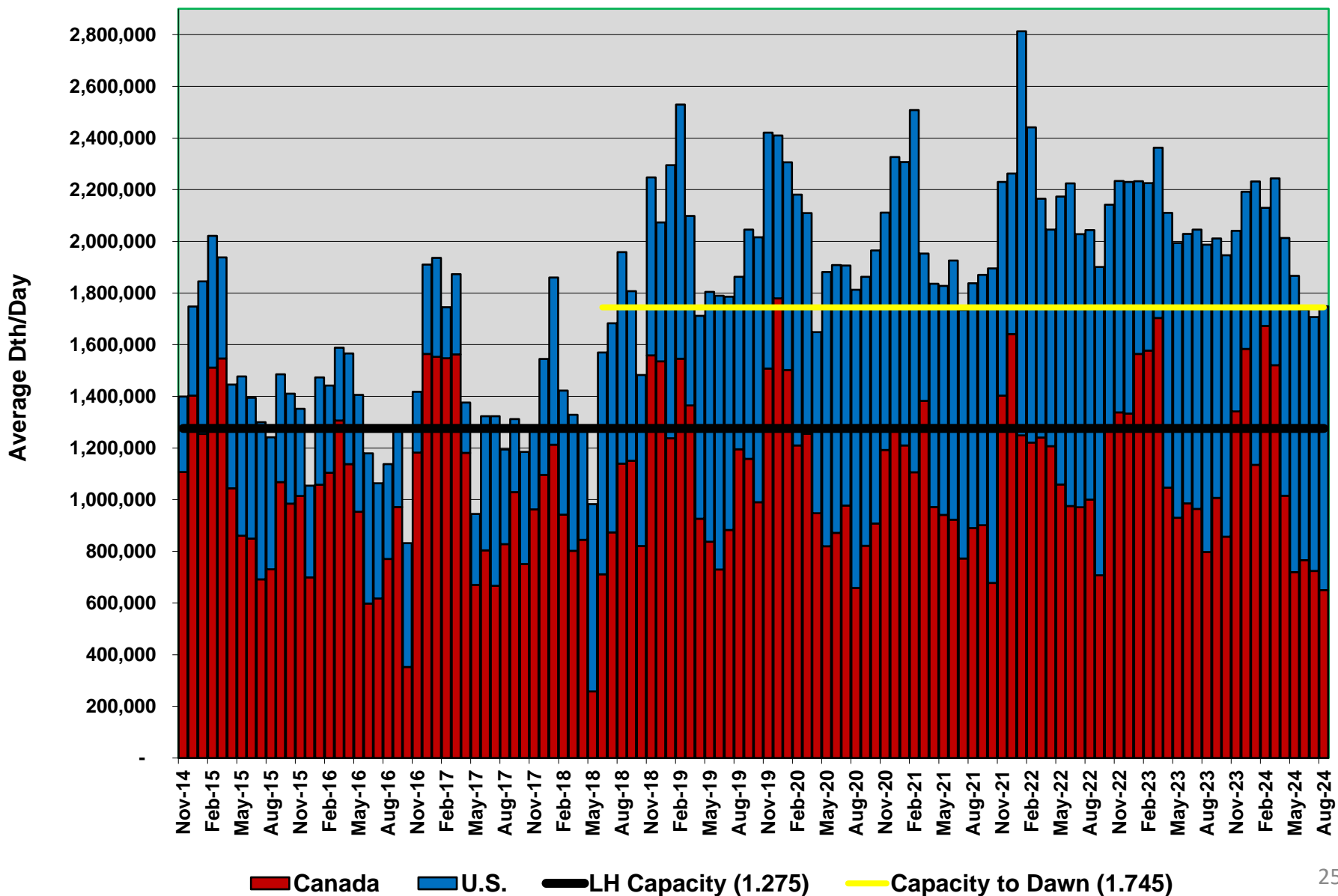




Vector Pipeline™

# Nominated Deliveries

(includes Longhaul, Shorthaul, Lease, Backhaul, and Segmented Capacity)  
November 2014 - August 2024



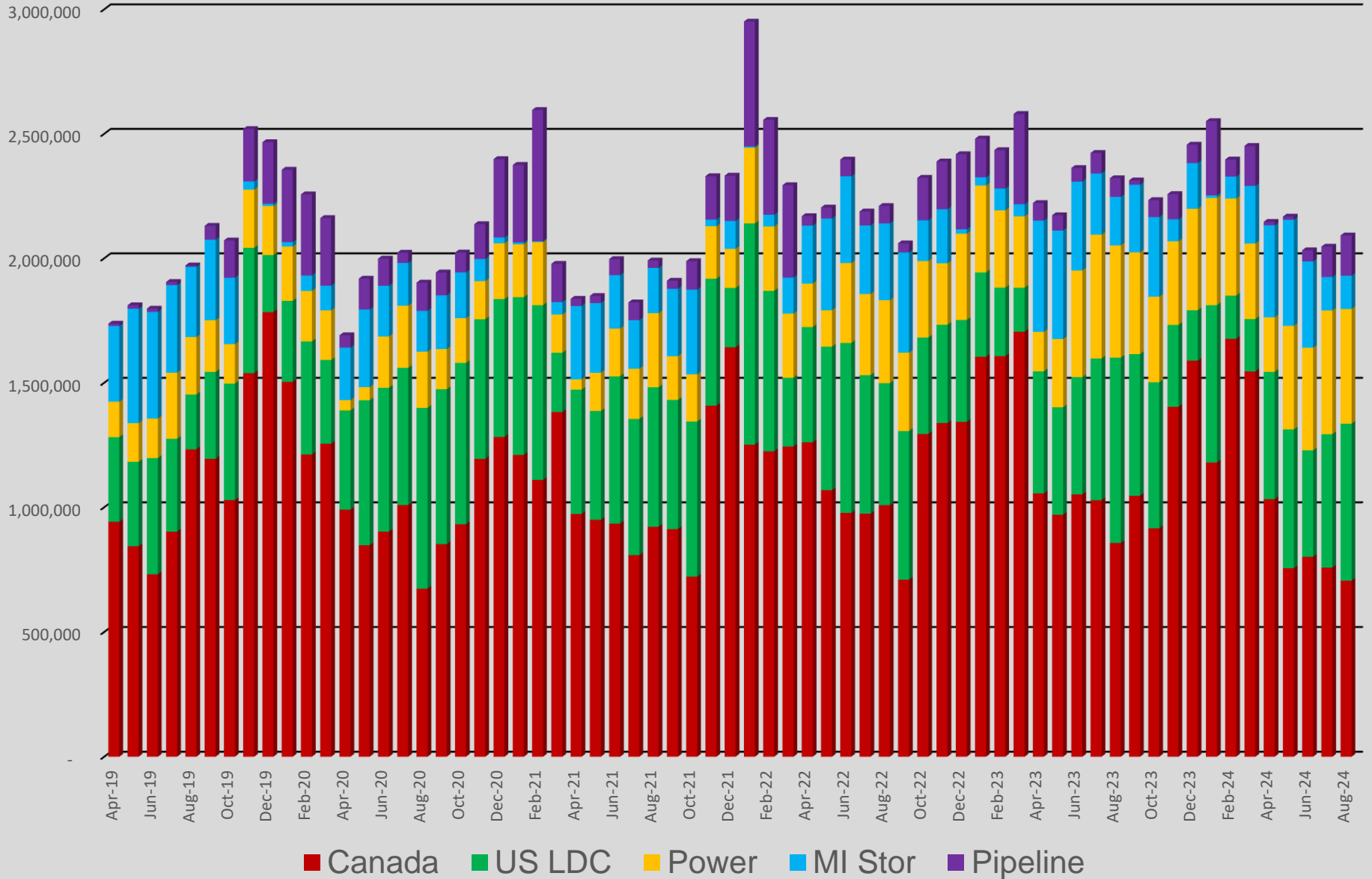


Vector Pipeline™

# Average Monthly Deliveries

By Interconnect Type

April 2019-August 2024

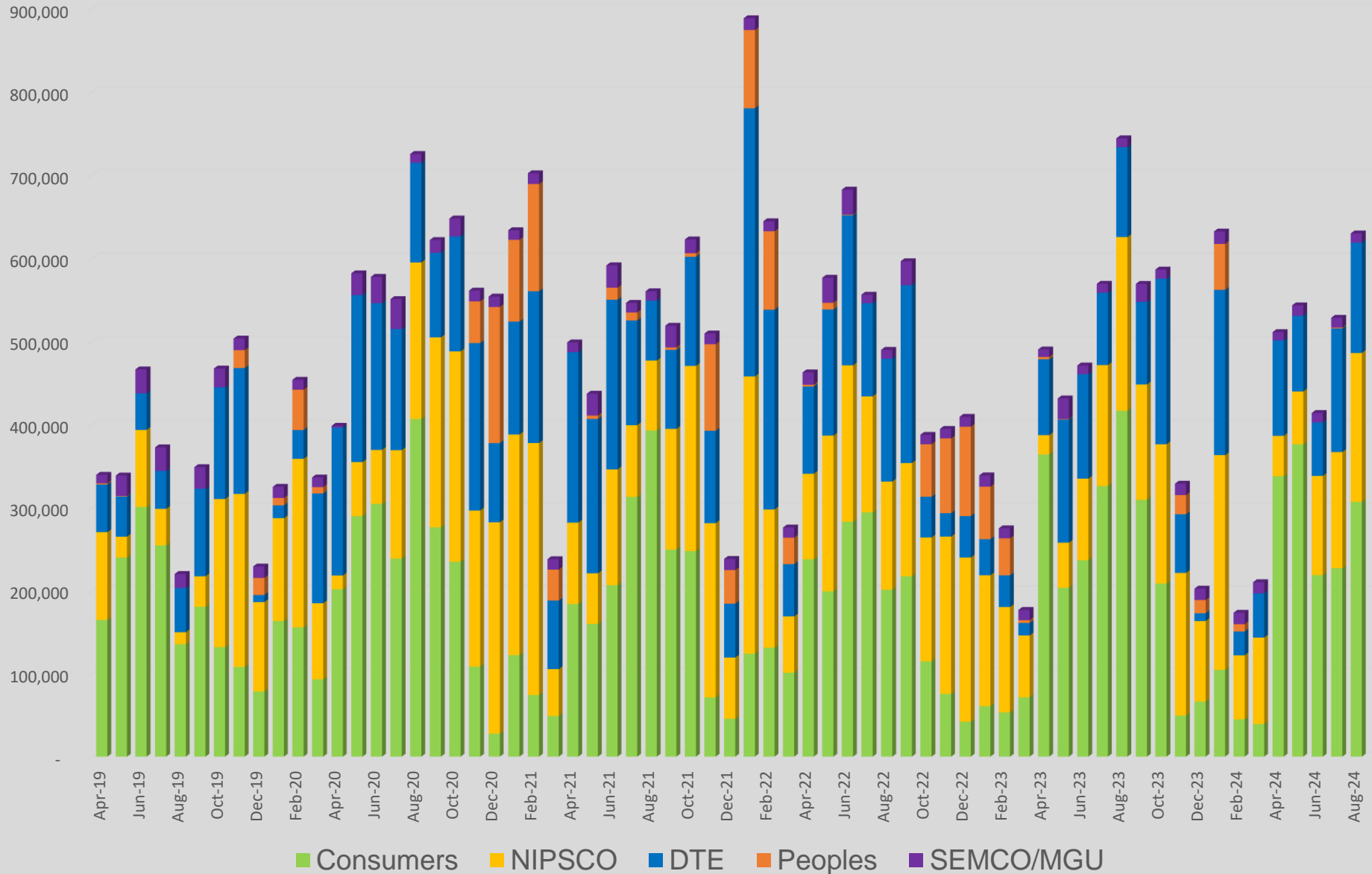




Vector Pipeline™

# Monthly Average US LDC Deliveries

April 2019-August 2024



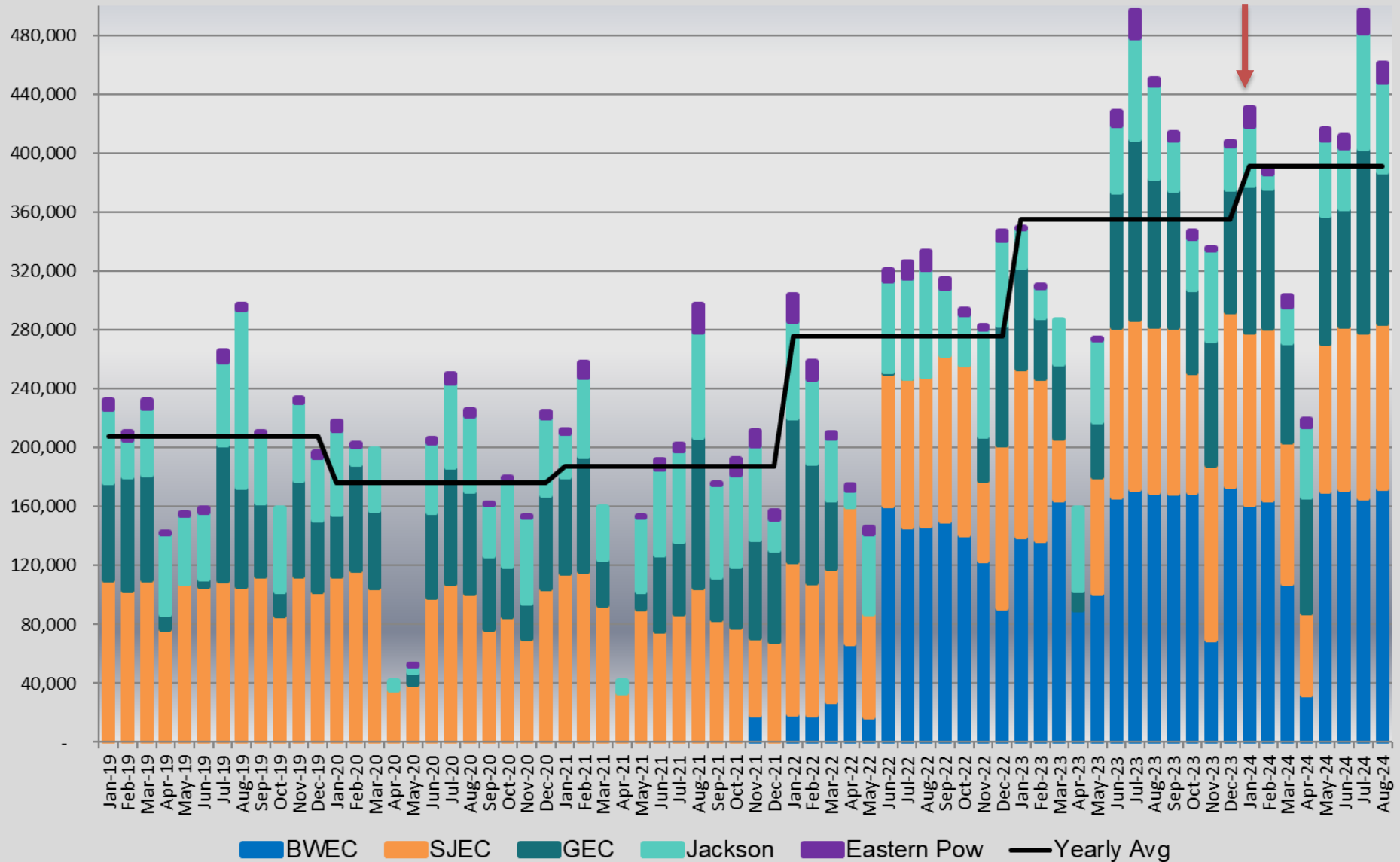


Vector Pipeline™

# Power Plant Deliveries

(Daily Avg)

April 2019-August 2024



# Peak Day Power Plant Balancing

In the days leading up to a peak cold front:

- Communicate with Vector to agree on a plan for any OBA makeup
- Energy managers expected to use balancing tools available to them to match hourly supply with plant burn
- As a last resort, Vector may utilize its OFO tariff provisions



**Vector Pipeline™**

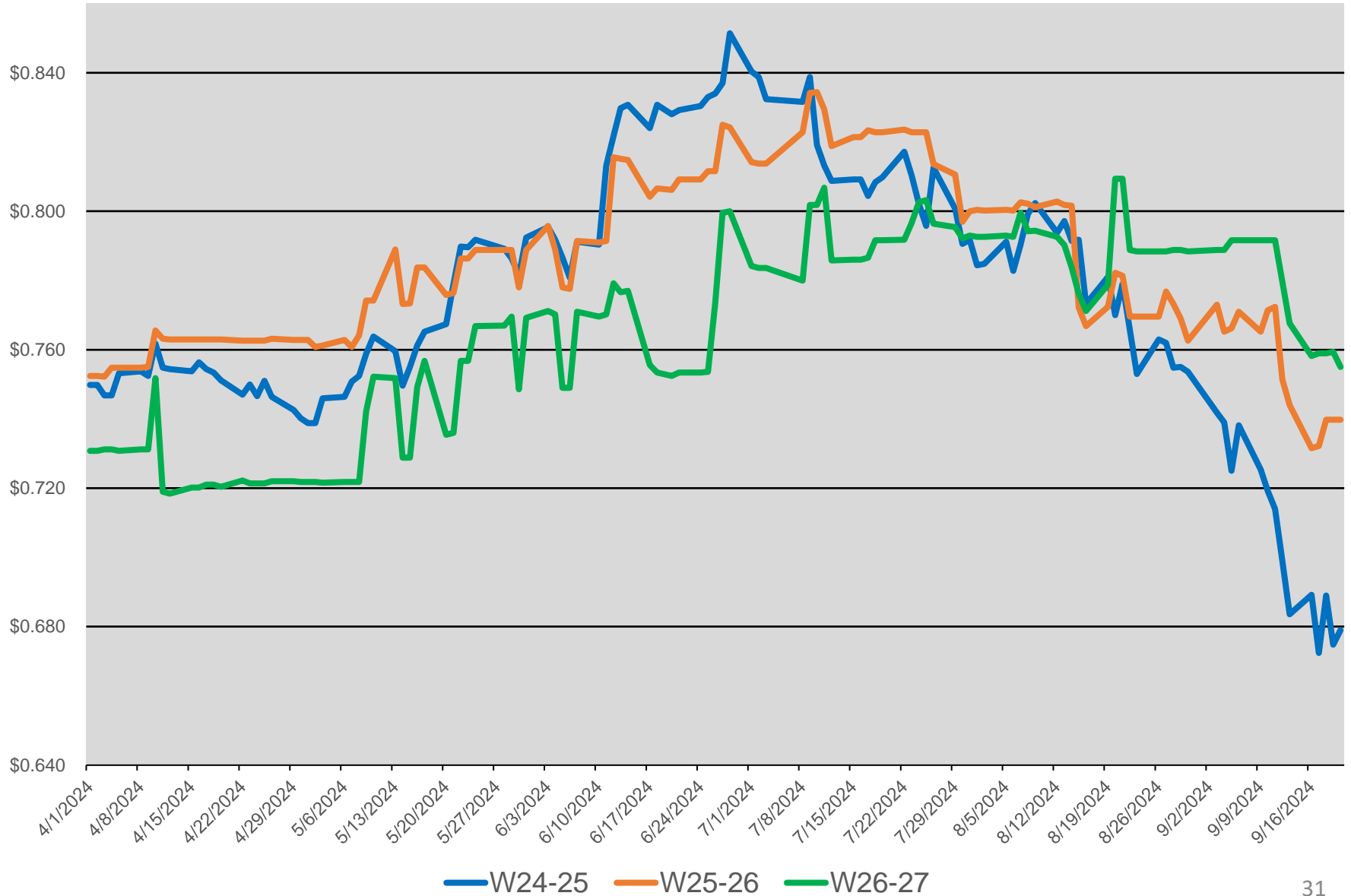
# Forward Outlook



Vector Pipeline™

# Mich - Alliance Winter Forward Spread

Summer 2024

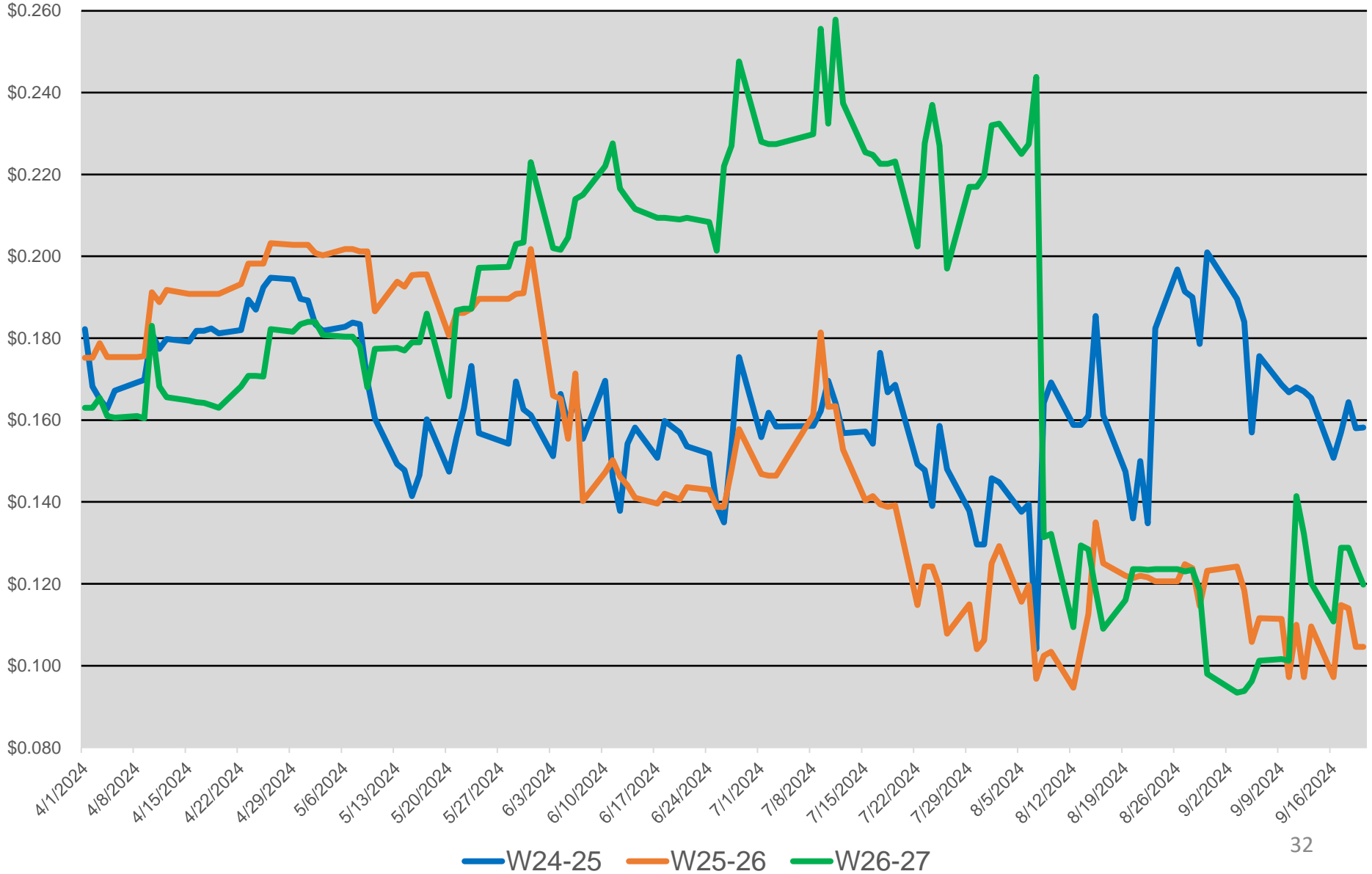




Vector Pipeline™

# Mich - Dawn Winter Forward Winter Spread

Summer 2024





# Potential East Bound Capacity (MDth/d)

	<u>Nov24</u>	<u>Apr25</u>	<u>Nov25</u>	<u>Apr26</u>	<u>Nov26</u>
<u>From Joliet:</u>					
Zone 1 Delivery	335	393	329	393	329
Milford Delivery	253	200	272	202	272
Dawn Delivery (LH) *	0	0	80	80	120

Note: \* Potential capacity subject to negotiations with incumbent shippers

# Potential West Bound Transport Capacity Delivery to Chicago

(MDth/d)

	<u>W24/25</u>	<u>W25/26</u>	<u>W26/27</u>	<u>W27/28</u>
From Milford or Rover:	0	0	109	159
From Mich Storage:	0	0	94	94

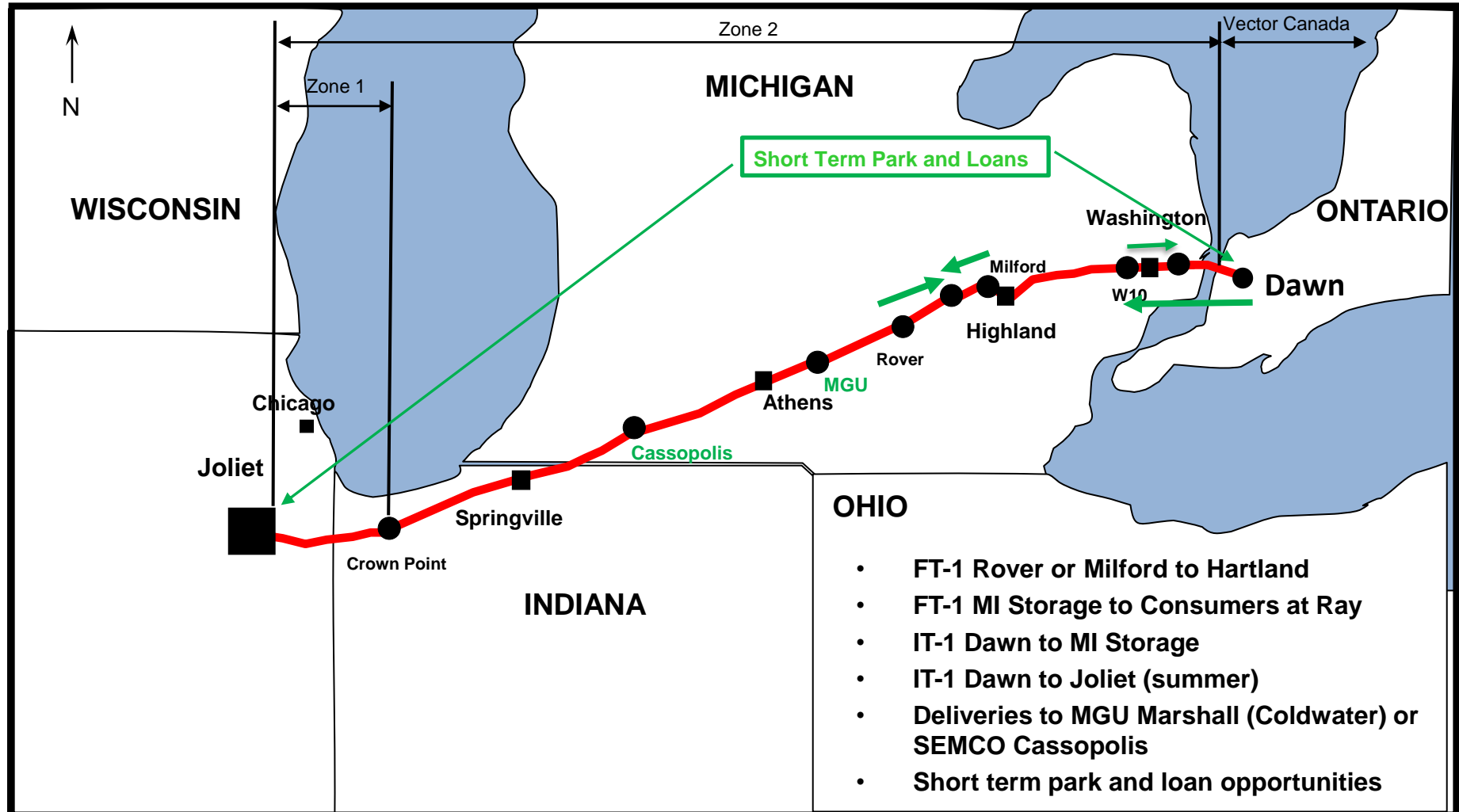
Note: Potential capacity subject to negotiations with incumbent shippers

# Potential Delivery Point Capacity (MDth/d)

	<u>W24/25</u>	<u>W25/26</u>	<u>W26/27</u>	<u>W27/28</u>
Guardian	22	22	195	221
Peoples Smith Road	18	18	80	169
NIPSCO Crown Point	534	534	534	534

Note: Deliveries to Alliance and Northern Border by displacement only

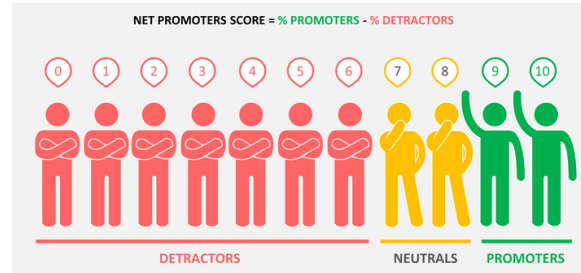
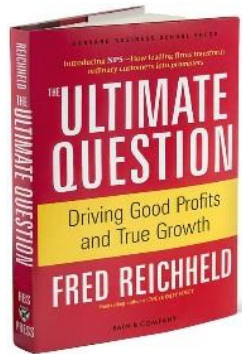
# Other Marketable Capacity



# **2024 Mastio Customer Satisfaction Survey**

# The Net Promoter Score

## A Key Piece in Maximizing Performance



### What is it:

NPS determines the % of promoters and detractors each supplier has within its respective industry.

### Based on:

“How likely would you recommend to a colleague or another business”...

### Benefits of this methodology:

- Unlike Customer Satisfaction, there is a strong correlation to financial performance.
- Dashboard Metrics – easy to monitor performance just like financial metrics.



Vector Pipeline™

# Net Promotor Score Overview

## 2024 Mastio Survey

### Promoters

*Loyal, invested customers. They stay longer, buy more and recommend you.*

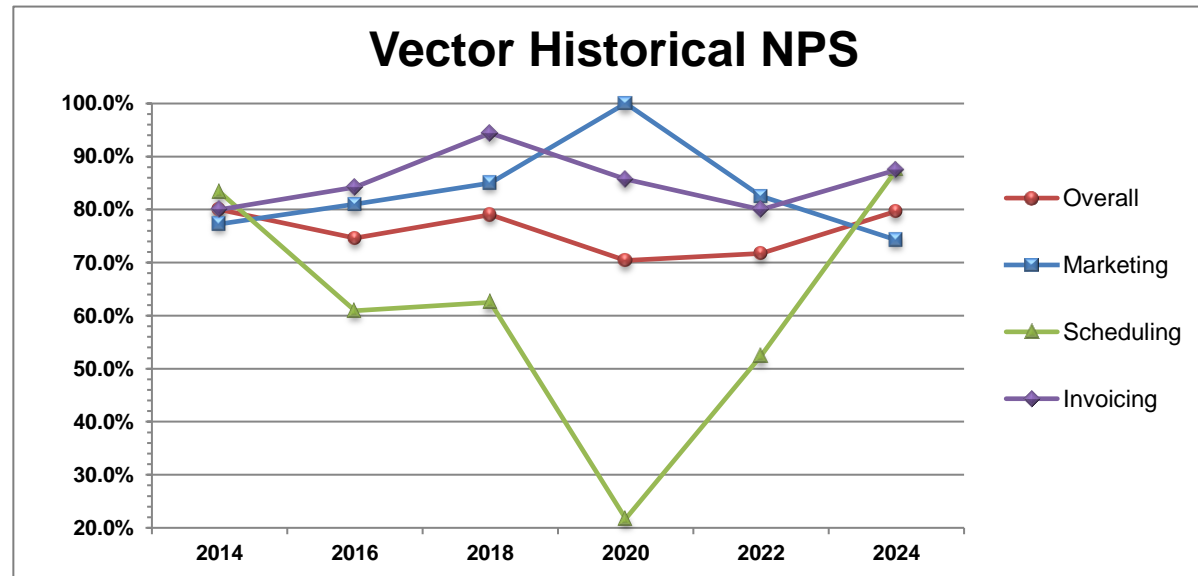
### Passives

*Neutral, not fully invested. Could be easily attracted with a better offer.*

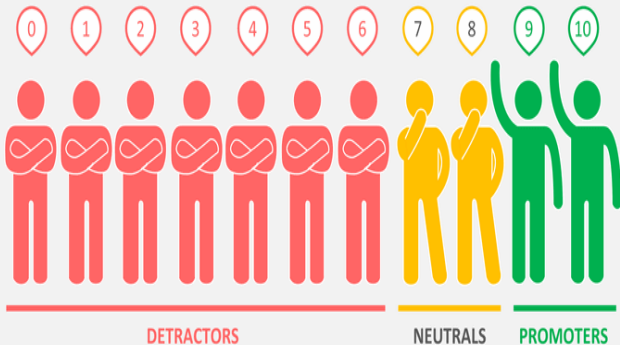
### Detractors

*Dissatisfied. More likely to defect and recommend AGAINST your company.*

Vector	# of Observations	% of Promoters	% of Detractors	% of Passives	NPS
Invoicing	8	88%	0%	13%	87.5%
Scheduling	16	88%	0%	13%	87.5%
<b>Overall</b>	<b>59</b>	<b>81%</b>	<b>2%</b>	<b>17%</b>	<b>79.7%</b>
Marketing	35	77%	3%	20%	74.3%



NET PROMOTERS SCORE = % PROMOTERS - % DETRACTORS



# Scheduling Performance Comparison

Scheduling	2024 Score	2022 Score	Difference	% Change
Operational information is readily available.	9.44	8.76	0.68	7.7%
Ease of the pipelines system for nominating and reporting.	9.44	8.85	0.59	6.6%
Ease of doing business.	9.31	8.90	0.41	4.6%
Ease of use of Vector's website.	9.00	8.61	0.39	4.5%
Timely notification before initiating restrictions.	9.20	8.85	0.35	4.0%
Expertise of personnel.	9.00	8.79	0.21	2.4%
Simple and straightforward capacity release system and procedures.	8.90	8.82	0.08	0.9%
Ease of use of QuickNom system.	9.06	9.00	0.06	0.7%
Quality of pipeline initiated communications.	9.00	9.00	0.00	0.0%
Representatives who listen well.	9.21	9.22	-0.01	-0.1%
Problems are resolved timely.	8.94	9.00	-0.06	-0.7%
Personnel respond quickly to requests.	8.81	9.11	-0.29	-3.2%
Easy to contact the right person for help.	8.50	9.00	-0.50	-5.6%
Scheduled gas volumes are accurate.	8.38	9.14	-0.77	-8.4%
How likely would you be to recommend this company?	9.50	8.67	0.83	9.6%





# Vector Scheduling Team

Primary Weekdays

Kenneth Glover

Backup Weekdays

Frank Biediger

Rotating Nights/Weekends

Nikki Wooley

Joel Russ

Weekday Manager

Andrew Moreno

Night/Weekend Manager

James Cymes



Vector Pipeline™

# Weekly On Call Posting



Vector Pipeline US

- Powered By Quicknom™

System Time: 09:19:36 AM Central Time  
Statement Date/Time: 09/20/2024 09:19:03 AM

[Gas Scheduling Contacts](#)

Currently logged in as: Dennis Scheibe  
TSP Name/TSP: Vector Pipeline L.P./87-913-6682

## Nominations

[Nomination](#)  
[Confirmation](#)  
[Scheduled Quantity](#)  
[Submit Nomination](#)  
[Upload Nomination](#)  
[EDI Confirmations](#)

## Flowing Gas

[Pre-determined](#)  
[Allocation](#)  
[Allocation](#)  
[Imbalance](#)  
[Measurement](#)  
[Measurement by Date](#)  
[Measurement by Hour](#)

## Invoicing

[Invoice](#)  
[Month To Date Invoice](#)  
[Generate Invoice](#)

## Capacity Release

[Offers](#)  
[Bids](#)  
[Awards](#)  
[Pre-approved Bidders](#)  
[Recall Capacity](#)  
[Reput Capacity](#)

## Contracts

[Contracts](#)

## Reports

Welcome to Vector QuickNom system. Please choose a link from left navigation.

### Gas Scheduling Contacts September 20, 2024 - September 26, 2024

Hot Line: [\(713\) 627-6076](tel:7136276076) Email: [transerv@enbridge.com](mailto:transerv@enbridge.com)

Confirmation/Scheduling all Cycles: Nikki Wooley ICE Chat: nwooley

(Monday – Sunday, 9:30 AM CST – 9:30 PM CST)

End of Day/Retros/End of Month: Ashley Alcott ICE Chat: aalcott

(Monday – Friday, 6:30 AM CST – 4:00 PM CST)

If a timely response is not received, please escalate to:

[andrew.moreno@enbridge.com](mailto:andrew.moreno@enbridge.com) (weekdays)

[james.cymes@enbridge.com](mailto:james.cymes@enbridge.com) (weeknights/weekend)



**Vector Pipeline™**

# **Pete Ciani**

## **President**

# Vector Rate Case

- September 19, 2024 - FERC Order instituting investigation pursuant to Section 5 of Natural Gas Act
- October 16, 2024 – Pre-hearing and scheduling conference
- December 3, 2024 - Cost and revenue study due
- Estimated ALJ decision 47 weeks later



**Vector Pipeline™**

# **Future Business**

# RNG Gas

- Vector has developers interested in connecting Renewable Natural Gas (RNG) projects into the mainline
- All potential Vector projects are dairy farm operators at this time
  - Located in Michigan
  - 2 sites currently in active discussions
- Small receipt points
  - Typically less than 1,000 Dth per day



# Load Growth along Vector

- Electric Vehicle Battery Plants
  - Marshall, Michigan – Ford/CATL
  - New Carlisle, Indiana – GM/Samsung
- Datacenter interest in Northwest Indiana
- Additional merchant / utility powerplants in Indiana, Michigan and Ontario
  - New powerplant in Ontario estimated to be online in May of 2025.

# Westbound Expansion

- Expand mainline capacity in the Westbound direction
- Requires a second compressor at the Athens Station
  - Move existing Joliet Unit 100 to Athens Station
- Incremental ~200 MDth/d from Rover, NEXUS or Milford
- Target In-Service – 2026/2027
- Execute binding commitments with 1-2 Anchor Shippers
- Implement Open Season to gauge interest in remaining capacity
- FERC filing shortly after binding commitments are formalized



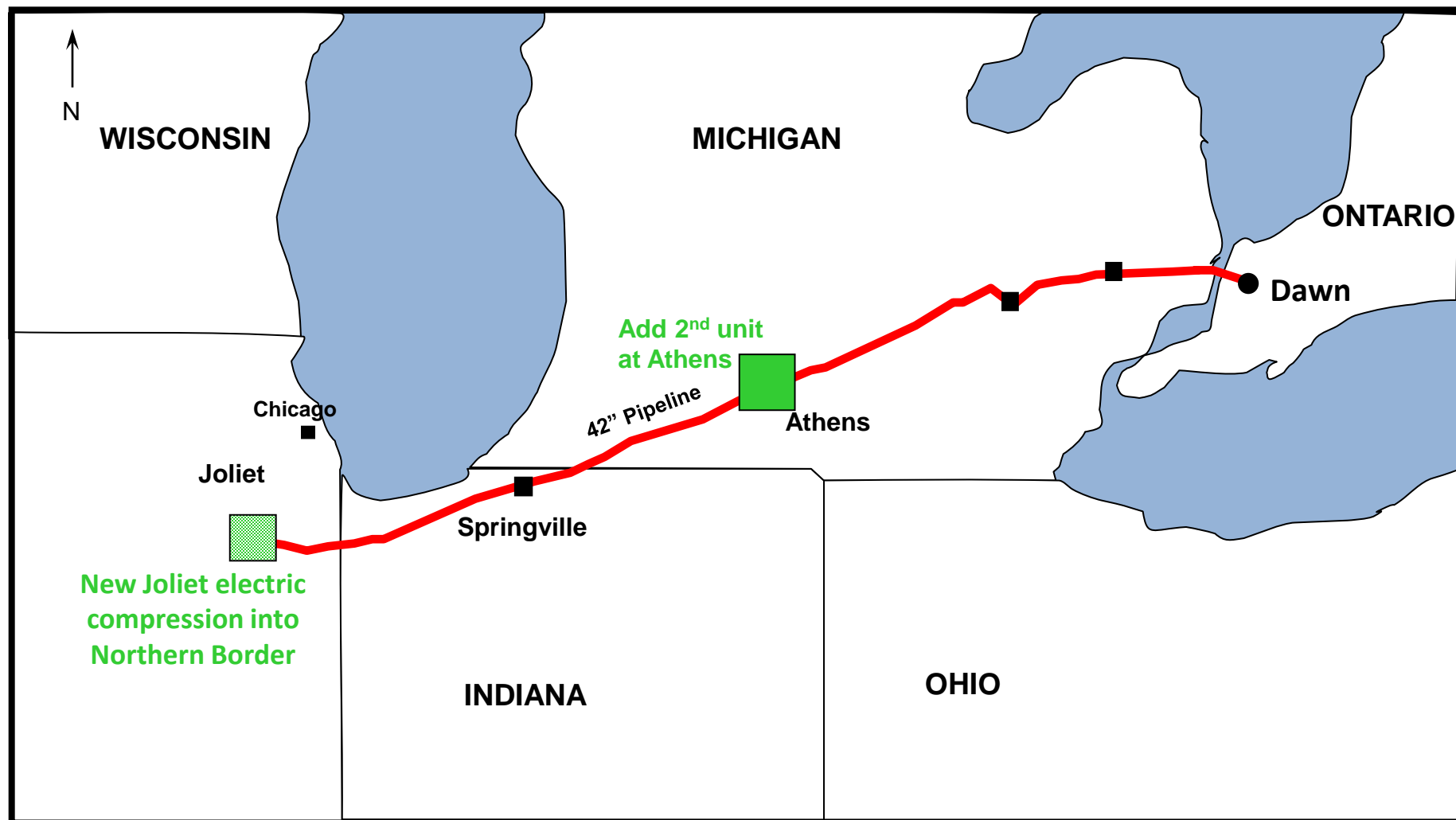
# Westbound Expansion Chicago Market Deliveries

- Increase delivery capacity into Guardian
- Additional deliveries to Peoples and NIPSCO
- Future Possibilities:
  - Northern Border Firm Compression Service
    - Requires installation of electric compressor
    - New Tariff Rate Schedule (incremental Compression service)
    - Capacity of 100 – 200 MDth/d
  - Interconnect with ANR Heartland project in Joliet Area



Vector Pipeline™

# Westbound Expansion Facilities





**Vector Pipeline™**

# **Thank You!**

**Direct any further questions to:**

Pete (734) 462-0233

Dennis (734) 210-8481

Brian (219) 794-4912